

Introduction

Congratulations on obtaining ACDSee 32, the fastest and easiest-to-use image viewer available for Windows 95, Windows 98, and Windows NT! ACDSee is several tools in one. A full-featured *image viewer* quickly displays your images in high quality. The *image browser* lets you efficiently find and organize your images. ACDSee also provides several *image manipulation* functions.

Image Viewing

As an image viewer, ACDSee stands unsurpassed in its ability to quickly decode and display images.

- Speed - Using its efficient decoder with incremental display, ACDSee displays images faster than any other image viewer.
- No waiting - multithreaded design means you can use other functions while ACDSee is processing -- you'll spend less time waiting and more time doing.
- Gamma correction lets you compensate for monitor non-linearity
- Less memory is required to view images than with full-fledged image editing applications.
- High quality output - ACDSee gives you single and two-pass dithering algorithms that make optimal use of your display's capabilities.
- Support for most popular image formats - BMP, DCX, EMF, GIF (including animation), IFF, JPEG, KDC, PCD, PCX, PIC, PIX, PNG, PSD, SGI, TGA, TIFF (including multi-page and 12/16-bit samples) and WMF
- Scroll, manual and auto zoom, auto-window size and full-screen mode features allow you to view your images the way you want.
- Slide show gives you the ability to view a sequence of images automatically. ACDSee provides read-ahead decoding, subfolder searching, forward/reverse/random and single/loop sequencing features. You can sync to a particular folder to automatically adjust the slide show list to reflect added/removed files.
- Select a portion of the image to zoom, print, wallpaper or copy to the clipboard
- Print your images along with names and descriptions. Print contact sheets for collections of images.

Image Browsing

ACDSee is the best choice for browsing images in your file system.

- High-speed preview lets you quickly and easily take a peek at images without interrupting or slowing down your exploration.
- Thumbnail mode shows a thumbnail of each image instead of the normal file icons, allowing you to visually browse more quickly through many images. Thumbnails can be automatically cached to a central database file.
- Rapid File management utilities including drag-and-drop and cut-and-paste allow you to quickly organize your images and other files into folders.
- Search for images by file name or description
- Visual overwrite confirmation shows you source and destination images side by side before overwriting images when copying or moving.
- Auto-skip can automatically skip copying or moving files if they already exist in the destination folder.
- The Favorites list, a feature unique to ACDSee, allows you to quickly move and copy files to a user-configured list of frequently used folders. Or, you can also use the list to browse frequently used folders. In addition, you can also add shortcuts to your commonly-used applications, then send files to them by dragging and dropping.
- File descriptions allow you to annotate any file with a descriptive phrase without altering the name or contents of the file.
- Customized file details allows you to configure how and what information about your files is displayed.
- Shell edit commands allow you to quickly open your images in your favorite image editor applications.
- A File list generator gives you a text listing of the files in a directory, including descriptions, file type, size, image dimensions and date.
- Shortcuts to images and folders (.LNK files) are handled transparently, allowing you additional flexibility in organizing your images.
- Browse and Acquire support for the Kodak DC-200 and DC-210 digital cameras
- Play sound (WAV) files automatically when they're selected

Image manipulation ACDSee provides the following frequently used image manipulation functions:

- File conversion allows images to be quickly and conveniently converted to BMP, JPEG (including progressive), PCX, TGA and TIFF formats. A batch of files can be converted all at once.
- Rapid lossless rotation of JPEG images
- Save a selected region of an image (cropping)
- Desktop wallpaper commands allow you to quickly change your desktop background to any image, centered or tiled.
- Copy to clipboard allows you to copy images from ACDSee into other applications.

User Interface

As a whole, ACDSee provides an efficient interface which has been highly optimized to minimize the amount of key punching and mouse pushing you need to do to get things done.

- ACDSee completely avoids the bulky, slow interfaces that plague most Windows software products in favor of streamlined operations.
- Whether you like to use the mouse or do it all from the keyboard, ACDSee provides you with the short cuts you need to do it quickly.
- To get you up and running quickly, ACDSee incorporates full on-line help with tool tips and context-sensitive pop-up help.
- Extensive customization options allow you to configure ACDSee to work the way you want it.

Image Formats Supported

Read support

BMP	Windows Bitmap	Windows and OS/2. 2/8/16/24/32 bpp. RLE and uncompressed.
DCX	Multiple-page PCX	All sub-types and multiple pages supported.
EMF	Enhanced Metafile Format	Win32 enhanced placeable metafiles.
GIF	Graphics Interchange Format	Single page and animated.
IFF	EA/Amiga Interchange File Format	1-24 bpp, including HAM and HAM8. Multiple pages and animations not supported.
JPEG	JPEG JFIF	JFIF and Adobe CMYK.
KDC	Kodak KDC.	Reads both the full image and the embedded thumbnail.
PCD	Kodak PhotoCD	Up to 3072x2048 resolution (16BASE).
PCX	ZSoft Publisher's Paintbrush	All sub-types supported.
PIC	SoftImage PIC	All sub-types supported.
PIX	Alias PIX	24 bpp.
PNG	Portable Network Graphics	All sub-types supported.
PSD	Adobe PhotoShop Document	RGB, grayscale, duotone, paletted and bi-level. Lab color interpreted as grayscale only.
SGI	SGI Image Format	8-32 bpp; no colormaps. RLE or uncompressed.
TGA	Targa TGA	All sub-types supported.
TIFF	Tag Image File Format	1/2/4/8/12/16 bits per sample, 1-4 samples per pixel. Bilevel/RGB/Paletted/CMYK/YCrCb/LOGL/LOGLUV. Uncompressed/PackBits/LZW//ThunderScan/SGILog/CCITT/ZIP/NEXT/New-JPEG. (no v6.0 JPEG support). Support for multi-page documents.
WMF	Windows Metafile Format	Win 3.x placeable metafiles.

Write support

BMP	Windows Bitmap	Windows 1/8/24 bpp.
JPEG	JPEG JFIF	8 and 24 bpp. Progressive and baseline. Adjustable compression factor, subsampling, smoothing and Huffman code optimization.
PCX	ZSoft Publisher's Paintbrush	8 and 24 bpp. RLE compressed.
TGA	Targa TGA	8 and 24 bpp. RLE and uncompressed. Top-down and bottom-up.
TIFF	Tag Image File Format	1/8/24 bits per pixel, single-page. Uncompressed, CCITT3, CCITT4, LZW, Deflate (ZIP), and JPEG compression. Adjustable DPI tags.

What's new in version 2.41?

Legend

- + New feature
- o Minor change
- !! Bug fix

Version 2.41- April 1999

- o Added "Use top-down bitmaps" display option
- o Changed display of animated GIF images to use a default 100 ms delay per frame when no frame delay is given
- o Turned off "View all images in folder" behaviour when more than one image is supplied on the command-line
- o The gamma tag for PNG images is ignored in order to provide display consistency with other applications
- o Turned off PNG alpha blending
- o Improved display quality for JPEG images
- o Added "snap to" functionality to Viewer's "Zoom 100%" and "Delete" buttons
- o PCDLib32.dll is no longer required to read Photo CD images at higher resolutions
- o Modified Browser's slide show command to start with random image when random slide show sequence has been chosen
- o Increased minimum distance mouse must be moved with right button down to start a drag-drop operation in view mode
- o Creation and last modified timestamps are preserved when rotating JPEG images
- !! Fixed problem where new margin settings were ignored during print phase.
- !! Fixed crash when exiting ACDSee after shredding a file with Gizmos' File Shredder from the shell context menu for a file in the Browser file list
- !! Fixed crash when showing info tip for files with very long descriptions
- !! Fixed intermittent crash when cropping images
- !! Fixed problem where "New folder" folder did not show up in file list when the "show folders" thumbnail mode option was turned off.
- !! Fixed problem reading Alias PIX images
- !! Fixed display/printing of certain WMF images
- !! Fixed bug printing filenames with extended characters
- !! Fixed problem displaying full path of folder names containing extended characters in titlebar
- !! Fixed bug displaying filenames with extended characters in "Confirm replace" and "Add to favorites" dialogs
- !! Fixed zoom commands to zoom into center of image instead of lower-right corner
- !! Fixed print module to allow output image size to exceed the printable area
- !! Fixed problem with black area below and to the right of scaled-to-fit image
- !! Fixed R<->B colour channel swap when reading 16 bps TIFF images
- !! Fixed bug dealing with invalid destination path names in Move/Copy To dialog box on Win98

Version 2.4- January 1999

- + Enhanced printing options, including contact sheet support and print preview.
- + Added support for EMF, SGI, Alias PIX, and Kodak KDC image formats.
- + Added support for TIFF images with 12-bit samples.
- + Added convert to TGA and convert to TIFF support.
- + Added lossless JPEG rotation.
- + Changed path box to a drop down list of recently accessed folders.
- + Added Cache Maintenance function
- + Added option to play WAV sound files
- + Added "Sync to folder" command in viewer.
- + Added "Paste here" command to items in Folder Tree and Favorites List.
- + Added "New sub-folder" command to items in Folder Tree.
- + Added option to show file sizes in KB.
- + Added "Automatically save window pos." Option.
- + Current cursor coordinates / selection dimensions are shown in status bar when <Shift> key is pressed.
- + Added commands to change the magnification of the images displayed in the Move/Copy Replace dialog box.
- + Displays #pages in a multi-page image in detail file list view mode.
- + Added "Defragment cache" command.
- + Added options to show file size and image dimensions together with thumbnails in thumbnail mode.
- + Added /p! command-line option to print without print setup and printer selection dialog boxes popping up.

- + Added /ss and seq:<seq-mode> command-line options.
- + Added /fullscreen command-line option.
- + Added Max. PhotoCD resolution setting.
- + Added support for 64 BASE Photo CD resolution.
- + Modified RenameSeries to support '*' character and escape '\' characters.
- + Added Change timestamp command.
- + Added "Print all..." command to view mode.
- + Added option to always confirm deletion of folders.
- + Added drag support to view mode (drag with right mouse button).
- o Significantly faster decode-and-display
- o Added support for multiple monitors under Win98/Windows 2000
- o Worked around annoying pause when deleting files with IE4/Desktop Update installed.
- o Improved thumbnail quality for B&W bicolor images
- o Improved progress indicator for animated GIF decoding.
- o Changed setup to create shortcut icons in a "ACD Systems" folder. New shortcut icons for Help file and Uninstall. Created shortcut icon folder(s) shown in Explorer window after installation completes.
- o Modified preview command (and auto-preview) to read the header of an unchecked file to see if it is an image.
- o Added "expand all" key <NumPad *> to folder tree.
- o Changed file list info tips to multi-line format and added file description.
- o Modified random slide show to re-randomize on wrap-around.
- o Enhanced toolbars with "Flat" style and background image.
- o When copying files to the clipboard, the full path names are also copied in text format.
- o Enhanced Move/Copy progress dialog with indication source & destination folders, and individual file progress (WinNT only).
- o Non-read-only commands (rename, etc) are disabled based on root of current path rather than current path.
- o Disable labels editing for items in folder tree that cannot be renamed
- o Single-clicking on the current folder in the folder tree causes a quick-refresh of the file list
- o Added "Create new shortcut" command to context menu of Favorites list.
- o Modified GIF decoder to properly support "87a" animated GIFs.
- o Links to folders are now followed in Slideshow Recursive and Find Images commands.
- o Converted "Look in" box in "Find Images" command to a drop down list
- o Dragging a file from the desktop will now move it by default when you drag to a folder on the system [C] drive.
- o Improved display of CMYK images
- o Added support for 16 bps PSD
- o Now reads WMF files with missing Aldus headers
- o Can view partial "Find Images" results after pre-maturely stopping the find operation.
- !! Fixed problem whereby entering small icon view mode from thumbnail mode caused the icons to be incorrectly arranged.
- !! Fixed problem where the dimensions of some JPEG files with embedded thumbnails were not extracted correctly
- !! Fixed access error deleting current folder in folder tree.
- !! Fixed problem when if ACDSee was started in view mode, then maximized, then an image was opened, the window would be hidden.
- !! Fixed bug where new files were not correctly placed at the bottom/top of the file list during an quick or auto-refresh event in thumbnail/icon/small icon mode.
- !! Fixed bug where images dropped on ACDSee's browser window Were not viewed correctly ("Cannot access file" error).
- !! Fixed problem on some systems where, when the "Auto-refresh" option was disabled, the file list was not automatically refreshed after moving files to and Explorer window.
- !! In Find Images function, fixed pattern matching for filename to not assume substring matching when an extension is provided in the filename.
- !! Fixed problem where read-ahead image was not resampled on decode when zoom lock was on with zoom < 100%.
- !! No error message was given if "view all images in folder" is enabled and no argument file specified in the command-line was found.
- !! Fixed bug causing thumbnail cache collisions between different volumes on a removable drive.
- !! Fixed bug MComparing two images with different colormaps on 256 colour systems.
- !! Fixed problem reading PCX images with explicit 16-colour palettes where paletteType==0.
- !! Fixed display of some PNG images.
- !! Fixed problem where view window appears after turning Viewer | Show menu option from browse mode.
- !! Fixed problem creating shortcuts in Favorites list when ACDSee is installed in a path that contains a period.
- !! Fixed Rename Series to work with extended characters.
- !! Fixed problem auto-updating file list when "auto column width" is turned on.

- !! File size is now written correctly in BMP file headers.
- !! Fixed bug where changing state of "use system icons" option would turn off image header reading.
- !! Fixed bug where icons were not displayed for images whose headers had not been scanned when "use system icons" option was turned off.
- !! Fixed slowdown reading network file system folders.
- !! Fixed problem deleting/moving/renaming PCD files.
- !! Fixed hanging problem when loading thumbnails for some truncated progressive JPEG images.
- !! Shortcut arrows now shown over shortcut icons on WinNT/IE4.0 systems
- !! Shortcut arrows now correctly shown over thumbnails.
- !! Support for file and drive sizes over 4GB
- !! Fixed Move to/Copy to function to correctly create target paths with UNC names

Version 2.3- April 1998

- + Added "Find images" command to search for images by filename and/or description
- + Selection feature: a rectangular portion of the image can be selected for zooming, printing, wallpapering or copying to clipboard
- + Save as command allows an image to be saved in a different format from view mode
- + Save *sequence* as... command allows the current image sequence to be saved to a file and reloaded at a later time
- + Gamma correction
- + Support for Kodak DC200 and DC210 digital cameras
- + Thumbnail caching
- + *Rename series* command allows a group of files to be renamed according to a numbered series
- + Shortcuts list now supports shortcuts to applications and other files
- + Automatic window scrolling during drag & drop
- + Expand/collapse folders in folder tree using other mouse button during drag & drop
- + The order of the columns of the file list can be modified
- + Option to remove original image file after converting it
- + Option to show full path of current folder in browse window title
- + Option to show shortcuts list on left side of file list
- + Option to enable/disable "click to rename" in file list
- + Option to double-click on file description to edit it
- + File size now shown in viewer status bar
- + Automatic file rename separator character can be configured
- + Enhanced DDE server commands allow multiple files to be opened at once and allow caller to specify Add/Replace and View all/View explicit options
- + Can view image file(s) by dragging and dropping onto browse window
- + Support for 4*BASE and 16*BASE PhotoCD resolutions
- + The shell context menu for an item or items can be accessed by holding down the <Shift> or <Ctrl> key while clicking with the secondary mouse button.
- o slideshow commands consider hidden files and folders only when the *File List | Show hidden files* option is turned on.
- o When multiple files are being described, the file currently being described is selected [and previewed]
- o Progress indicator for background processing is more efficient
- o Faster updating when browse window is resized
- o Faster browser startup
- o Setting of "Overwrite" format conversion option is now saved across sessions
- o Added context-sensitive help to Format Conversion and Set File Associations dialog boxes
- o Replaced functionality of "Print entire image / Print content of window" with "Selection" option of Print dialog box
- o Automatic saving of view window position is replaced by explicit "Save window pos." command
- o "Auto-reset zoom to 100%" option replaced by "Zoom lock" command
- o Shrunk images are now reloaded at the lowest possible resolution when the magnification is increased (instead of 100%)
- o Pressing <Esc> in view mode to return to browse mode no longer selects the image viewed. However, <Enter> continues to do this.
- o TIFF decoder will now upsample TIFF data in Y axis where appropriate according to reported aspect ratio
- o TIFF decoder now handles 16-bit samples
- o TIFF decoder will now read 2 and 4 bpp grayscale and colourmapped images.
- o Support for TIFF YCrCb, Tiled, SGILog, SGILog24, and PlanarConfig==2 images
- o Source image's file description is copied to output file description when converting image
- o Can press <P> to temporarily show full path of current image file in view window.
- o A shrunk image is reloaded unshrunk when auto-shrink is turned off or when auto-zoom command is invoked

- o Revamped help file
- o Now distributed with comctl32.dll v4.72
- o Spawn View (View + <Shift> key) now works with a multiple selection
- o Slide show delay is now specified in ms
- o Shortcut overlays displayed for shortcuts in thumbnail mode
- o Progress window when creating shortcuts
- o Can use <Ctrl+Shift+A> to select all files and folders.
- o Removed flicker effects from file list quick-refresh
- o Changed browser processing progress indication from text to bar.
- !! Fixed a bug that prevented files from being copied/moved to UNC file systems
- !! Fixed bug which could cause maximized window position to become incorrect after switching out of full screen mode
- !! Fixed file filter to not pass all files when no matches occurred
- !! Fixed read-ahead problem where flipping to the next image, if it were partially decoded, would result in decoding restarting from the very beginning
- !! Fixed bug in info tips that could cause the wrong image dimensions to be displayed
- !! "All" option in Print dialog is now interpreted properly
- !! Modified Shell Open/Edit commands to only pop up Open with/Edit with box when the file association is missing or incomplete
- !! Fixed randomized slide show to work with >32767 images
- !! Modified TIFF decoder to handle single-strip images with a incorrectly specified strip byte count.
- !! Fixed problem with disappearing status bar icon in view window.
- !! Fixed some problems reading GIF images with missing GCEs and incorrect LSD information.
- !! Fixed problems renaming a folder in the folder tree.
- !! OEM Convert and Set hidden attribute description file options were not honoured in view mode.
- !! Fixed full screen mode bugs occurring when screen resolution is changed on the fly.

Version 2.22 – December 1997

- + conversion options (JPEG)
- + convert to PCX
- + Auto-Shrink and Auto-Enlarge option toggle commands to Viewer
- + info tips for items in file list and shortcuts list [comctl32.dll v4.71 req'd]
- + option to disable toolbar tips
- + added Open, View, Print and Browse shell command options to Set File Associations
- + "Show version & path in title bar" Browser option
- + Colour-coded image highlighting in file list
- o comctl32.dll (required for full functionality) is now installed during setup
- o better-looking, more memory efficient and much faster rendering of file icons in thumbnail display mode
- o the status bar shows the path to the target folder when items are dragged onto items in the shortcuts list
- o changed PCX decoder to correctly decode badly encoded images: those where byte runs cross row boundaries and those with incorrect 256 colour palette markers
- o modified "auto-start" slide show option to allow auto-start from Browser's slide show commands
- o Optimized auto-refresh to minimize flicker
- o in report mode when the sort method is changed, the list is scrolled so that the focus item appears in the [vertical] middle of the view
- o the current selection in the file list(including a multiple selection) is now retained across sort changes, view style changes, auto-refreshes, etc.
- o viewer window is no longer activated at every image change during a slide show, or when files are dragged and dropped
- o currently selected/viewed file icon appears in status bar of Browser and Viewer windows [comctl32.dll v4.71 req'd]
- !! worked around bug in Win95 that caused system resource leak when decoding WMF files
- !! problem with "View all images in folder" not working when ACDSee was started on the command line
- !! fixed support for EGA PCX images
- !! fixed support for 16/32 bpp BMP files using BI_BITFIELDS encoding
- !! problem handling RLE encoded BMP files with delta escapes
- !! work-around for misplaced selection anchor in file list (comctl32.dll v4.71 or later req'd)
- !! bug that prevented 30-character registration names from working
- !! reduced size of Move/Copy confirmation boxes to fit 640x480 screens
- !! fixed problem handling short (8.3) filenames passed via command-line when the "View All" option was turned on
- !! images can now be dragged and dropped before preview has finished loading
- !! slow decoding and quantization error due to round-off errors in shrink-to-fit option

- !! during auto-refresh, new items are now added to their proper positions in the list, even in thumbnail, icon and small icon modes
- !! fixed bug that could cause descriptions entered in Viewer to be lost if Auto-refresh was turned on and Read Image Headers was set to Never
- !! fixed bug which could cause a crash when the last image in the Viewer's image sequence was deleted
- !! preferred auto-size window position was lost when the window was minimized
- !! when a folder in the folder tree was renamed, its file description was lost
- !! when printing, file descriptions longer than one line are correctly printed

Version 2.21 – October 1997

- + added support for DCX format (multi-page PCX FAX)
- o reduced memory overhead for loading GIF images
- o the file list is automatically updated when files are dropped into it, even if the "auto-refresh" option is turned off
- !! file list would sometimes auto-refresh continuously when running on Windows 95 and "Cache in description" and "Reading image information" and "Auto-refresh" options were turned on
- !! some interlaced animated GIF images were not decoded properly
- !! problem handling animated GIF images with missing GCE's
- !! round-off error could cause horizontal lines to appear when decoding interlaced images at a high zoom level

Version 2.2 – October 1997

- + Added support for SoftImage PIC format
- + Shortcuts to images are now handled transparently
- + Added Cut, Copy and Paste commands to Browser for file management
- + Added Copy Image commands to allow images to be copied to the clipboard
- + Added Paste command to Viewer to allow files copied from Explorer to be pasted into the image list
- + Revised Move/Copy Overwrite options, adding auto-rename
- + Added "Slideshow" and "Slideshow Recursive" commands to Viewer
- + Added "Save defaults" button to Options dialog – options are no longer permanently saved when OK is pressed
- + Added shell open/edit commands to Viewer
- + Added option to hide Browser path box ("View > Controls > Path box")
- + Added Remove All command to Move/Copy Files dialog box
- + Added "Tools > Generate File List" command
- + Added "Image List > Highlight Image Files" option
- + Added "/p" command line option for printing images
- + Added FileName edit box to Move/Copy Files Dialog box when a single file is being moved to allow it to be renamed
- + Added "Apply to all" checkbox to Edit File Description dialog to allow a single description to be applied to several files at once
- + In full screen mode, you can press and hold down the b, t and m keys to temporarily show the status bar, the tool bar and the menu, respectively.
- + "Oem convert" option for file descriptions
- + Option to show full image file path in Viewer
- + "Show hidden files" option is now available directly from the browse window (View menu or Ctrl+H)
- o Added selected file name to status bar of Browser
- o Changed default renamed file in Move/Copy to use a unique postfix number instead of "Copy of..."
- o Added option to disable open/remove commands
- o "Exit after delete/move" now causes the Viewer to exit to the Browser when the last image in the image list is deleted or moved (only if ACDSee was started in Browse mode)
- o Internal move/copy is used for drag and drop file operations now (except folders)
- o Added new Read Image Headers option : "Only on non-floppy and non-CDROM disks"
- o Numeric keypad +/- now expand/collapse items in folder tree
- o The current parent folder name is shown in the title bar of the Browser
- o Added keyboard shortcuts to help menu
- o Rearranged Browser File List context menu
- o Reversed the meaning of Ctrl and Shift when applied to Delete command to better
- o Limited WMF bitmap size to prevent use of too much memory when displaying WMF files of large dimensions
- o Added support for IFF-HAM, IFF-HAM8 and IFF-EHB
- o Added support for TIFF-CMYK, PSD-CMYK and JPEG Adobe CMYK
- o Prevented selection of next item in list if a multiple move operation was just completed and all files were successfully moved. Instead, the next item just receives the focus.

- o The setting of the "Hide non-image files" option is no longer automatically saved on exit
- o Preview/Next Page commands added to Viewer toolbar when a multi-page image is viewed
- !! several problems displaying animated GIF images
- !! Visible glitch in split bars after adjusting
- !! ACDSee would hang when decoding truncated IFF images
- !! Viewer title bar did not update after a rename or after a Remove All command
- !! Auto-refresh into sorted position was not working correctly
- !! Browser did not always detect file description changes made in the Viewer
- !! Sort mechanism was ignoring '-' and '' characters
- !! "Browse with ACDSee" shell command appeared in non-file folders such as Recycle Bin and My Computer
- !! Colour component alignment problem with non-interleaved PCX images
- !! Various auto-refresh bugs
- !! Double-update flicker problem when switching images in Viewer in auto-zoom
- !! Preferred window size was saved incorrectly when flipping out of Full-Screen mode
- !! Preview image did not appear when set to be to the left of the file list and the folder tree was turned off
- !! Crash when converting 24bpp images when running in 256 colours
- !! new OS/2 bitmaps were not read correctly
- !! Glitch in the rightmost 8 pixels of some 2-colour GIF images
- !! Preview in progress was unnecessarily cancelled and restarted during an auto-refresh event
- !! File being decoded in viewer could not be renamed
- !! File list filtering was not working in Browser
- !! Subfolders were not updated when a parent folder was renamed in the folder tree
- !! GIF dimensions were not interpreted correctly for some images
- !! Various glitches with randomized slide shows
- !! Fixed a bug displaying interlaced GIF images with only 2 rows
- !! Fixed bug that made Rename button on MCReplace dialog skip file if user had skipped a previous image in the same move/copy operation
- !! Fixed bug that refreshed the file list unnecessarily when deleting a file with auto-refresh, read image headers and save image info in description options on
- !! Fixed problem with wallpaper not being updated in WinNT 4.0 and Memphis
- !! Fixed problem reading PSD subtypes BITMAP and LAB, and those with extra channels
- !! Fixed problem reading IFF images with masking==mskHasTransparentColor
- !! Fixed problem handling short (8.3) filenames passed via DDE or on command-line when the "View All" option was turned on

Version 2.1 – May 1997

- + Support for Electronic Arts/Amiga Interchange File Format (IFF)
- + Support for Adobe PhotoShop Documents (PSD)
- + Confirm replace dialog now shows source and destination images for comparison
- + Print Setup options
- + Added Show Next and Previous Slide show Image commands to Viewer
- + Can now be started in View mode with no images using the /v option
- + Options to show folders and non-image files in thumbnail view mode
- + Option to bypass recycle bin by default
- + Option to disable GIF animation
- + Option to allow Auto-refresh to be turned off
- + Option to automatically exit Viewer after deleting/moving the first
- + Options to disable Browser, File-Ops, Options, Options-Save, Wallpaper and Print features
- + Added middle or left+right mouse button support for toggling full-screen mode
- + Web Page command in Help menus
- + Help tips for menu items
- o "View all" option now applies to File|Open Viewer command
- o Improved document icons
- o The remove wallpaper command now restores the original wallpaper, if any
- o Changed thumbnail code to use DIBs when possible
- o Changed left mouse button double click in viewer to switch to Browse mode
- o Changed progress indicator in Browser so it doesn't cover up the status bar information
- o Re-optimized updating of File List when files are deleted/moved from Viewer
- o Enhanced refreshing of folder tree
- o Changed to format numbers (e.g., file sizes) according to locale prefs
- o Changed Viewer to exit when the last image is moved to another folder.
- o Changed "confirm deletion" option to "don't confirm"

- o Added help button to registration dialog box
- o Modified registration-nag image counter to include thumbnail images
- o Changed non-system icon scheme to provide image type-specific icons
- o Drives in file list auto-refresh when CD-ROM is inserted or removed
- o Show Preview option in Viewer's Open dialog box is now saved and restored
- !! Fixed enabling/disabling of buttons and menu command in Viewer
- !! Fixed auto-window-size bug when the system tray was placed at the top or left hand size of the screen
- !! Fixed bug which caused the slide show to stop when a bad image was encountered
- !! Fixed bug with "phantom" ACDSsee on task bar
- !! Fixed a bug which caused file descriptions with extended characters to be displayed incorrectly
- !! Fixed problem where not all thumbnails in a large folder could be created
- !! Fixed a bug which occasionally caused a crash when dragging and dropping
- !! Fixed animated GIF support to work better with images whose first frame is smaller than the entire overall animation dimensions
- !! Delayed Browser auto-refresh while in View mode until the Browser is returned to
- !! Browser's View menu items are now checked/unchecked properly
- !! Fixed bug which prevented creating shortcuts to drives
- !! Fixed a few bugs with file associations
- !! Fixed a bug which (when Folder Tree is hidden) caused some drives not to appear in the file list sometimes
- !! Fixed a bug which caused a refresh after deleting a file and "cache image headers" option is on
- !! Hidden folders are no longer shown in the folder tree if the "show hidden files" is not turned on
- !! Fixed bug which could cause the entire registry to be deleted if removing file associations from the options dialog
- !! Fixed bug which caused a divide by zero exception when generating a thumbnail for a 1281x1 image
- !! Fixed problem with long delay when drag-moving files out of a large folder
- !! Fixed a nasty bug with "Set File Associations..." which could cause the registry to become corrupt

Version 2.0 – April 1997

- + support for animated GIF images
- + support for Windows Metafiles (.WMF)
- + folder tree
- + shortcuts list
- + thumbnail file list view mode
- + image format conversion
- + drag and drop file management
- + automatic file list refreshing
- + integrated tabbed options dialog
- + added option to use device-dependent bitmaps
- + Open, Close and Close All commands in Viewer
- + Rename and Describe commands in Viewer
- + menu bars
- + support for Microsoft IntelliMouse
- + options to show/hide Browser toolbar, status bar, menu, etc.
- + option to show/hide Viewer menu
- + auto-zoom feature
- + auto-zoom reset option
- + option to hide mouse cursor in full-screen mode
- + option to save/restore browse window size and position
- + dither mode for preview image is configurable
- + option to add or replace Viewer image list with dropped files
- + option to expand auto-sized Viewer window to the right and down rather than centered
- + snap cursor to buttons feature
- + preview area can be configured to appear on the left, on the bottom, or on the right
- + different icons for each supported file type
- + "New folder" command to create new folders
- + Associated file types can be easily set within the application
- + "Show gridlines" and "Full row select" file list options
- + Windows NT 3.51 is no longer supported
- o faster image panning
- o the preview is automatically reloaded when the preview area is resized (when auto-preview option is on)
- o the file list rather than the preview window is resized when the window is resized
- o significantly faster scrolling performance with some video drivers
- o reorganized status bar information

- o increased maximum slide show delay to 1 day
- o new 256 colour program icons
- !! fixed bug which caused some PCD images to be displayed topsy-turvy
- !! fixed bug which caused a crash when displaying very long file descriptions
- !! fixed bug where a new incoming image reset the slide show sequence mode to Forward mode
- !! fixed bugs which caused some TGA images to be read incorrectly
- !! fixed colourmap problem with some 256-colour PCX images

Version 1.0 – January 1997

Initial release.

Year 2000 compliance

ACD Systems, Ltd., warrants that ACDSee32 shall commit no date-related error due to its operation within or between the 20th and 21st centuries, insofar as the underlying operating system and hardware function correctly, such correct function including, but not limited to, the accurate implementation of the Win32 application programming interface as defined by Microsoft.

For information regarding year 2000 compliance of Microsoft's operating systems, please see the Microsoft Year 2000 Resource Center at <http://www.microsoft.com/year2000>

ACDSee user interface

In this section the user interface components of ACDSee are described.

ACDSee can run in one of two modes:




Browse mode presents an Explorer-like interface that allows you to locate and manage images stored in your file system. This is the default mode when you start ACDSee.

View mode allows you to view a selected sequence of images, one at a time. This is the default mode when you double-click on an image file in Explorer to view it in ACDSee.

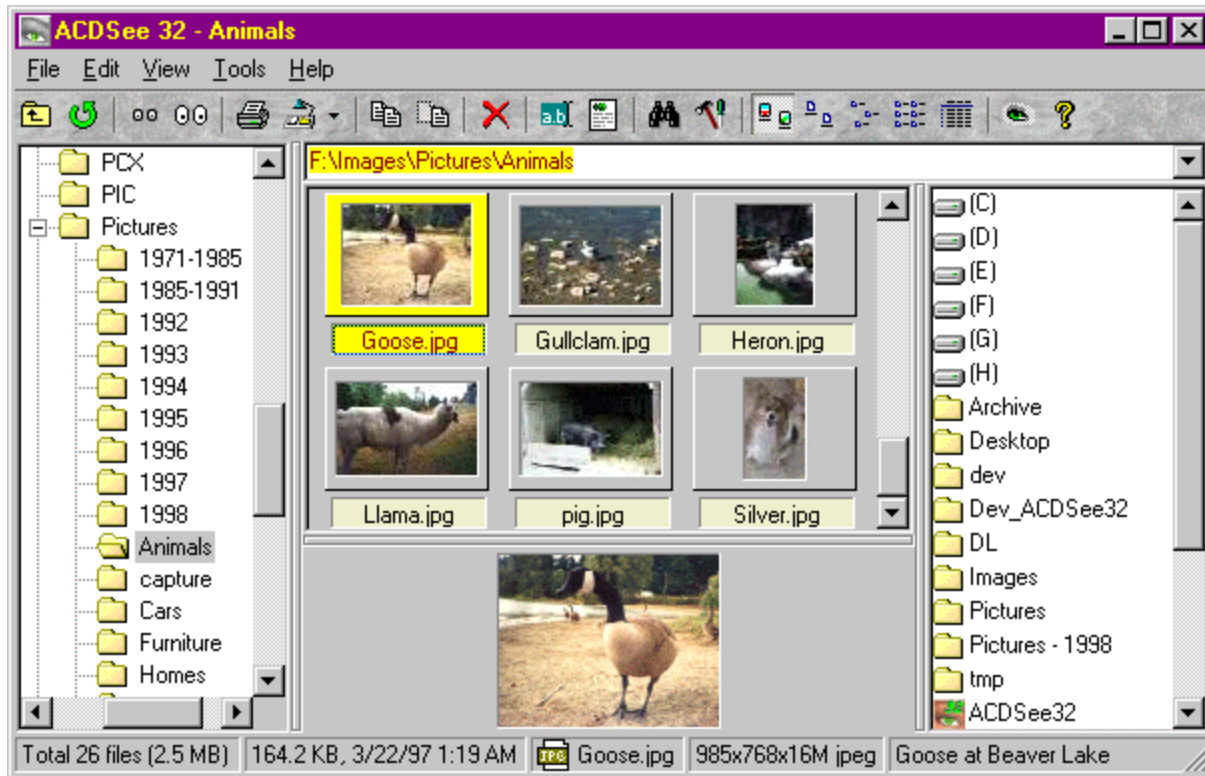
You can switch between browse and view mode easily, but only one mode is active at a time.

Notes

- You can customize characteristics of ACDSee by clicking on the  button, or by invoking commands under the *View* menu.
- If you click on an item or area in ACDSee's window with the alternate mouse button, a context menu appears giving you quick access to relevant commands.





Browse window

ACDSee's image browser provides you with much of the functionality of Explorer. In addition to managing your files, you can perform commands on image files.



<u>Toolbar</u>	provides buttons to activate commands
<u>Status bar</u>	displays status information and properties for selected files
<u>Path box</u>	specifies the path of the current folder
<u>File list</u>	displays the files within the current folder
<u>Folder tree</u>	displays the folders hierarchy of your file system
<u>Favorites list</u>	provides quick-access to folders, applications and other files
<u>Preview area</u>	displays the currently selected image

Navigation

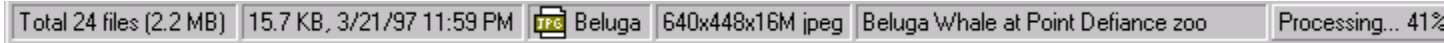
- You can navigate through your file system by clicking on folders  and drives 
- To open a folder or a drive, double click on the icon.
- To move up one folder, double-click on the folder  labeled "..", or click the  button on the toolbar.
- The path for the current folder you are inside is shown in the box just below the tool bar.

Notes

- Context menus are available by clicking with the alternate mouse button in the file list, folder tree, Favorites list, file list header buttons, preview area and status bar.
- You can get the Windows Shell context menu for an item or items instead of ACDSee's context menu by holding down <Shift> or <Ctrl> while pressing the alternate mouse button.
- If you want to perform a slide show HOWTO_SLIDE_SHOW, it is OK to select both image and non-image files. The files which are not images will simply be ignored.

Browse window status bar

The status bar, located at the bottom of the browse window, displays status information and properties for the selected file(s).



Folder summary information

Shows the total number and size of the files shown in the file list.

Selected file information

The following information is shown when a single item is selected:

File: size and time of last modification

Folder: time of last modification

Drive: free and total space of drive

The following information is shown when more than one item is selected:

Total number and size of the selected files.

File name and icon

The file name and small icon of the currently focused item are shown.

If the item is a shortcut, the shortcut's target filespec is shown.

Image properties

If the currently focused item is an image, its dimensions and format are shown as

<width>x<height>x<#colours> <format>

File description

If the currently focused item has a file description, it is shown.

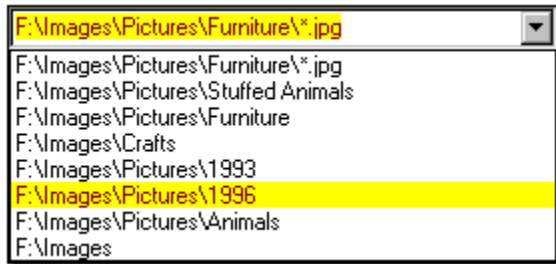
Processing progress

If ACDSsee is processing information in the background (reading image headers or retrieving thumbnails), the percent completion is displayed.

- A context menu will be shown when the status bar is clicked with the alternate mouse button.
- You can stop and start background processing by double-clicking on the status bar
- You can show or hide the status bar with the *View | Controls | Status Bar* menu command.

Browse window path box

The path box, located between above the file list, specifies the current folder being browsed.



- You can enter a different path and press <Enter> to browse the specified folder
- You can append a *filename filter* to the path to show only matching files in the specified folder e.g., C:\Images\Fish*.jpg

The path box also has a drop-down list of recently used folders. You can browse any recently used folder by selecting it from the list.

- You can press <F4> to open or close the drop-down list.
- You can press <Cursor Up> and <Cursor Down> to select an item from the list without first dropping it down.
- Press <Enter> to enter the currently selected folder.

Notes

- You can press <Esc> at any time to cancel the path selection process and return to the current path.
- A context menu will be shown when the path box is clicked with the alternate mouse button.
- You can show or hide the path box with the *View | Controls | Path Box* menu command.
- The *Browser | Save most recently used folders list* option determines whether or not the list is saved when ACDSsee is closed

Browse window file list

The file list displays information about the files in the folder currently being browsed.


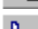
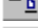

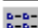
Name+	Size	Image Properties	Description
 Excalibr.jpg	109,572	1024x671x16M jpeg	Excalibur hotel in Las Vega
 Hapuna1.jpg	24,764	500x347x16M jpeg	Hapuna Beach in Hawai'i
 Hapuna2.jpg	48,564	640x480x16M jpeg	Hapuna beach in Hawai'i
 Hellsgte.jpg	119,661	523x768x16M jpeg	Hell's gate
 Hooverdm.jpg	57,388	522x768x16M jpeg	Hoover Dam near Boulder City, Nevada
 Lasvegas.jpg	164,912	1024x672x16M jpeg	Las Vegas
 LUXOR.jpg	141,157	1024x670x16M jpeg	Luxor hotel in Las Vegas
 Mgmgrand.jpg	38,898	640x424x16M jpeg	MGM Grand hotel in Las Vegas
 Mirage.jpg	97,931	1024x681x16M jpeg	Mirage hotel in Las Vegas
 mountain.jpg	211,240	1188x1787x16M jpeg	Mountains behind Cleveland Dam in North Vancouver



- ✓ Show Size
- Show Type
- Show Date
- ✓ Show Image Properties
- ✓ Show Description

View mode

To change the way files are displayed, click on one of the following:

-  view image files as thumbnails
-  view files in rows of large icons
-  view files in rows of small icons
-  view files in columns of small icons
-  view files as small icons with details

These options are also available from the *View* menu.

Details mode columns

In *details* mode, file information is presented in report format, each file occupying one row.

Showing/hiding columns

You can click with the alternate mouse button in the column headers area at the top of the file list to bring up a context menu that allows you to make each column visible or invisible. The name column is always visible. Or, from the main menu, select *View | Show Columns* from the menu, and then the column you wish to show or hide. Using the keyboard, you can press any of the keys <1> through <6> on the numeric keypad (you must have <Num Lock> turned on) while holding down <Ctrl> to toggle the display of the size, type, date, image dimensions and description columns, respectively.

Changing column order

Click on the column's header with the primary mouse button, and drag it into the desired position. The position where the column will be inserted is identified by a coloured vertical line. Column settings are automatically preserved between sessions.

Sorting

You can change the way items in the file list are arranged as follows:

Column headers

In *details* view mode, you can sort file by a particular column by clicking on the corresponding header button above the file list. Clicking on the same column repeatedly will alternate between forward and reverse sorting. A '+' or '-' will appear next to the column currently being sorted on.

Menu

Select the desired sort method from the *View | Arrange Icons* menu.

Context menu

You can click with the alternate mouse button on the background of the file list to bring up a context menu. From here, select the desired sort method from the *Arrange Icons* sub-menu.

Shortcut Keys

You can press any of the keys <0> through <6> on the numeric keypad (you must have <Num Lock> turned on) to sort by file extension, name, size, type, date, image dimensions or description, respectively. Press <Num -> and <Num +> to set the sort direction.

The method of sorting is preserved across sessions and remains in effect until it is explicitly changed.

Selecting files

To select a file, click on it with the primary mouse button, or move the focus to the item using the arrow keys. To select additional files, hold down <Ctrl> and click on a file, or move the focus to a file and press <Space> to select/deselect it. To select a range of files, first select the first item in the range, then select the last item in the range while holding down <Shift>. To select all files, use the *Edit | Select all files* menu command.

Options

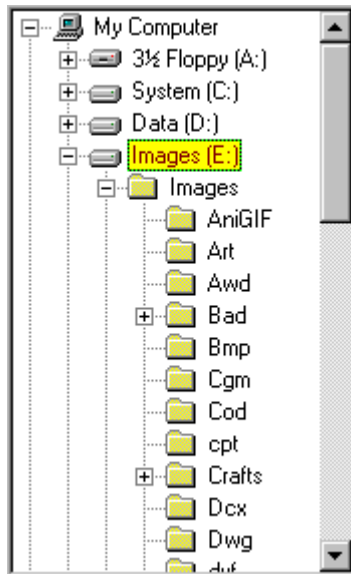
You can set file list options by selected *Tools | Options* from the menu and clicking on the *File List* tab.

Context menu

- A context menu will be shown when you click on an item in the file list with the alternate mouse button. You can display a context menu for several items by selecting them and clicking on one with the alternate mouse button.
- If you also hold down <Shift> or <Ctrl>, the Shell's context menu will be shown.
- A different context menu appears if you click on the background of the file list instead of an item.

Browse window folder tree

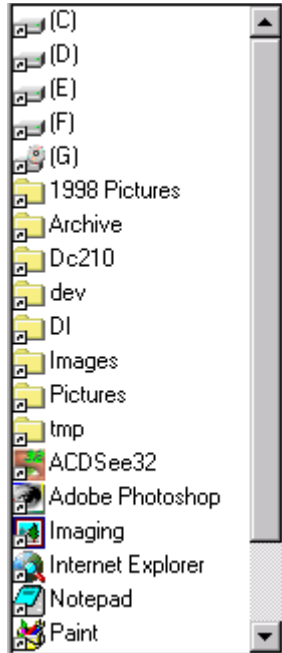
The folder tree, located on the left side of the browse window, displays the folders of your file system as a tree.



- Whenever you select a file system folder in the folder tree, it is designated as the current folder and its contents appear in the file list to the right.
- If a folder contains subfolders, a [+] appears next to the folder icon. You can expand the folder to show the subfolders by clicking on the [+], or by selecting the folder and pressing <Cursor Right> or <Numpad +>. A [-] will appear to an expanded folder.
- You can collapse a folder to hide its subfolders by clicking on the [-], or by selecting the folder and pressing <Cursor Left> or <Numpad ->.
- You can drag and drop a folder to copy or move it to another location.
- A context menu will be shown when you click on an folder with the alternate mouse button. If you also hold down <Shift> or <Ctrl>, the Shell's context menu will be shown.
- You can show or hide the folder tree with the View | Controls | Folder Tree menu command.

Browse window favorites list

The Favorites list, which can appear either on the left or the right of the file list, displays a list of shortcuts to items you wish to access frequently.



You can create shortcuts to several types of objects:

Folders

You can use folder shortcuts in order to quickly:

- move or copy files into the target folder
- browse the target folder
- slide show images within the target folder
- search the target folder for images

Applications

You can use application shortcuts in order to quickly:

- start the target application
- open file(s) using the target application

Files

You can use application shortcuts in order to quickly:

- open the target file with the default associated application

Adding items to the favorites list

1. Find the item(s) you want to add in the File List, Folder Tree, or Explorer.
2. Click on the item with the alternate mouse button and select "Add to favorites" from the context menu, or drag the item(s) and drop onto an empty area of the Favorites list.

Opening an item in the favorites list

- Double-click on the item, or
- Click on the item with the alternate mouse button and select *Browse* or *Open* from the context menu.

Dropping files onto items in the favorites list

1. Select the file(s).
2. Using the alternate mouse button, drag them into the Favorites list and drop them on the item corresponding to the desired target.
3. Select *Move*, *Copy*, *Send to* or *Create shortcut(s)* from the context menu.

You can also drag with the primary mouse button. The action that will be taken (Copy, Move, Send to, Shortcut) is indicated by the mouse cursor shape. Hold down <Ctrl> and/or <Shift> to select alternate operations.

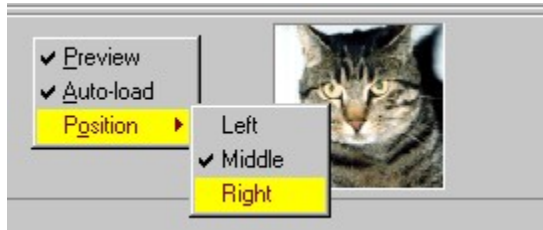
Renaming and Deleting favorite items

1. Select the item.
 2. Press <F2> to rename or <Delete> to delete, or
 3. Click on the item with the alternate mouse button and select Rename or Delete from the context menu.
- A context menu will be shown when you click on a folder with the alternate mouse button. If you also hold down <Shift> or <Ctrl>, the Shell's context menu will be shown.
 - You can specify the position and view style of the favorites list using the *View | Favorites* menu, or by clicking

on the background of the Favorites list with the alternate mouse button to get a context menu.

Browse window preview area

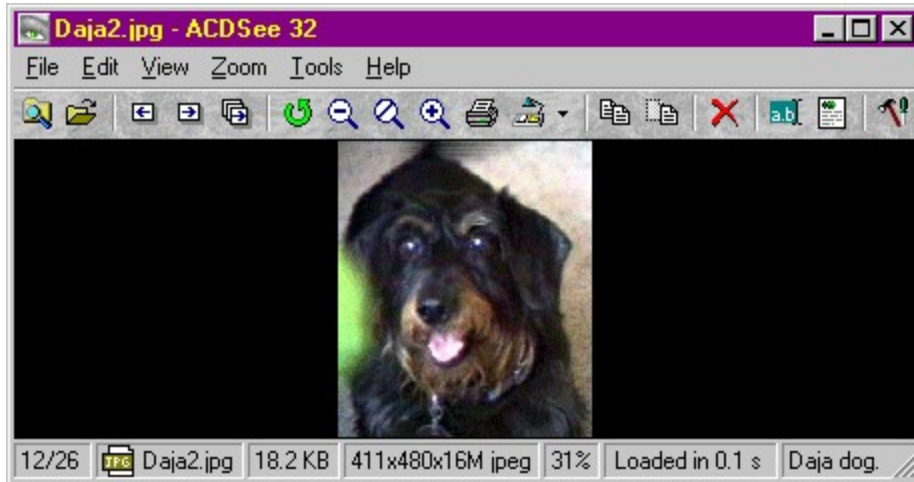
When this area is visible, a preview of the currently selected image can be shown.



- You can adjust the relative amount of room available to the preview area by dragging the split bar.
- You can configure the position of the preview area and the size of the preview image using commands in the *View | Preview* menu. Pressing <Numpad *> will toggle the preview size between automatic and full size.
- If the *Auto-preview* option is turned on, a preview of the selected image will be shown automatically. Otherwise, you must invoke the *View | Preview* command each time you want to see a preview of the selected image.
- If you double-click on the preview, the image is shown in *View* mode.
- If you click with the alternate mouse button in the preview area or on the preview image itself, a context menu is shown.





View window

ACDSee's view window shows your images one at a time in full resolution while still giving access to most of the functionality available in browse mode.



Toolbar provides buttons to activate commands
Status bar displays status information and properties for selected files
View area area where the current image is shown

Navigation

- If there is more than one image in the image sequence, you can use the  and  buttons to navigate to the previous and next images in the list.
- You can also use the Page Up, Page Down, Home and End keys to navigate.
- If you have the Microsoft IntelliMouse, you can turn the wheel while holding down Shift to flip through the images in the list.
- For images containing multiple pages, the first page is shown initially. To view other pages, use the  and  buttons. (These buttons are only visible while viewing a multi-page image).
 - By holding down the Shift key, you can also use the same keyboard and Intellimouse shortcuts listed above to flip pages.

See also

[Image sequences](#)
[Zooming](#)
[Panning/scrolling](#)
[Selection](#)
[Slide show](#)

View window toolbar

The toolbar, located at the top of the view window below the menu bar, consists of a number of small buttons identified by icons.



- To activate a command, click on the corresponding button with the primary mouse button.
- To get a short description of the function of each button, rest the mouse cursor over the button.
- You can show or hide the status bar with the *View | Toolbar* menu command.
- The toolbar is normally hidden in full-screen mode. However, you can temporarily show it by holding down the <T> key. If you press <Shift+T>, the toolbar will be stuck on until you press <T> again.

View window status bar

The status bar, located at the bottom of the view window, displays status information, [image sequence](#) information, and properties for the current image.

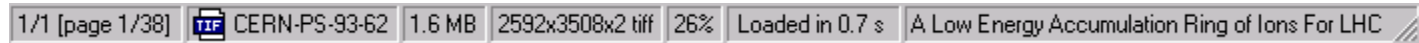


Image sequence information

The sequence number of the current image and the number of images in the sequence are indicated as `<Img#>/<Num. Images>`.

Page information

For a multi-page image, the current page and total number of pages in the image are indicated as `[page <Page#>/<Num. pages>]`.

File name and icon

The file name and small icon of the current image is shown.

File size

The size of the stored image file is shown.

Image properties

The dimensions and format of the current image are shown as `<width>x<height>x<#colours> <format>`

Zoom level

The current zoom level is indicated as a percentage.

When *zoom lock* is active, an asterisk [*] appears to the level of the zoom level.

Decoding progress/time

- If the current image is being decoded, the progress is indicated by an expanding pop-out bar and the word “Loading...” appears.
- Once the current image has completed decoding, the time it took to decode and display it appears.
- If the read-ahead image is being decoded, its progress is indicated by an expanding pop-out bar.

File description

If the current image has a file description, it is shown.

- You can show or hide the status bar with the *View | Status Bar* menu command.
- The status bar is normally hidden in full-screen mode. However, you can temporarily show it by holding down the `` key. If you press `<Shift+B>`, the toolbar will be stuck on until you press `` again.

View window view area

The view area is used to display the current image.

Scrolling

If the image is larger than the window, the mouse cursor will appear as a hand instead of an arrow. You can then scroll (pan) the image by dragging it with the primary mouse button. You can also scroll using the cursor keys. See also: [Panning/scrolling](#)

Selection

You can select an area of the image by holding down <Shift> and dragging with the primary mouse button. (If the image is not scrollable, you do not need to hold down <Shift>). You can then zoom into the selection by clicking in it with the primary mouse button. See also: [Selection](#).

Context menu

If you click in the view area with the secondary mouse button, a context menu will appear. If you hold down <Shift> and click with the secondary mouse button, the Shell context menu for the current image will be displayed.

Starting the program

Starting in browse mode

You can start ACDSee in browse mode by clicking on the corresponding icon on the Start Menu. You will be presented with the image browse window where you can browse your system.

Starting in view mode

You can start ACDSee in view mode by clicking on the corresponding icon on the Start Menu. You will be presented with a window where you can drop files for viewing, or use the File|Open command to add images to the image sequence. You can switch to browse mode at any time with the *Browse* command.

The Browse with ACDSee command

You can start ACDSee's browser in a particular folder in Explorer by clicking on the folder with the alternate mouse button and selecting *Browse with ACDSee* from the context menu.

Note: If there is no *Browse with ACDSee* command in the context menu, go into the *Miscellaneous* tab of ACDSee's *Options* window and click *Set file associations...* and check the *Browse with ACDSee* shell command item.

The Print with ACDSee command

You can print an image from Explorer using ACDSee by clicking on the image file with the alternate mouse button and selecting *Print with ACDSee* from the context menu.

Note: If there is no *Print with ACDSee* command in the context menu, go into the *Miscellaneous* tab of ACDSee's *Options* window and click *Set file associations...* From here, check off the relevant file types and check the *Print with ACDSee* shell command item.

Launching from another application

You can also start ACDSee from the Explorer by just double clicking on an image file. Certain other programs, such as Internet applications, can also run ACDSee automatically for you as you receive images. By default, a new ACDSee instance (i.e., window) is started for each image viewed. You can have all images appear in the same window by changing the *Miscellaneous* | *Startup files* option.

Note: If double-clicking on an image file does not bring up ACDSee, go into the *Miscellaneous* tab of ACDSee's *Options* window and click *Set file associations...* From here, check off the relevant file types and click *OK*.

Command line arguments

Default behaviour (no arguments)

When no command line arguments are given, ACDSee starts in browse mode in the default folder.

Specifying images to view

You can supply one or more image files as the command line argument to ACDSee. You can even use wildcards:

e.g., `acdsee32 c:\images*.jpg` - start ACDSee and have it view all the .JPG files in the c:\images folder.

Note: if any file name includes spaces, you **must** enclose it in quotation marks:

e.g., `acdsee32 "Metal Links.bmp"`

e.g., `acdsee32 "C:\My Pictures\Spot.psd" D:\Downloads*.jpg`

Browsing a particular folder

You may specify a particular folder to browse as the command-line argument:

e.g. `acdsee32 c:\images\` would start the ACDSee browser in the c:\images folder.

Starting in View mode (with no images)

You can start ACDSee in view mode without an image by specifying the `/v` command line switch:

e.g. `acdsee32 /v`

ACDSee will ignore all other command-line arguments when the `/v` switch is present.

Printing

You can use ACDSee to print one or more images and exit by specifying the **/p** command line switch:

e.g., `acdsee32 /p "C:\My Pictures\Spot.psd" "D:\Downloads*.jpg"`

You can bypass the printer selection and print setup dialog boxes that normally appear by adding an exclamation mark (!) to the **/p** switch.

e.g., `acdsee32 /p! "Gloxina.jpg"`

Slide show

Use the **/ss** command-line switch to specify that ACDSee should start a slide show on startup.

Use the **/seq:forward**, **/seq:reverse** or **/seq:random** to specify the order of the slide show.

e.g., `acdsee32 /ss /seq:random "d:\images*.jpg"`

Full-screen mode

Use the **/fullscreen** command-line switch to specify that ACDSee should start in full-screen mode.

Synchronize to folder

Use the **/sync <folder>** command-line switch to specify that ACDSee should synchronize to the specified folder.

Image sequences

In view mode, one or more images are available for viewing using the *View | Next image*, *View | Previous image*, etc. commands. These images make up the active *image sequence*. The number of images in the sequence and the number of the currently viewed image within the sequence are shown in the status bar.

Adding images to the sequence

You can add additional images to the sequence by any of the following methods:

- File | Open... command.
- Copy files to the clipboard in Explorer and paste them into ACDSee using the Edit | Paste files command.
- Drag image files from Explorer and drop them into the view area (the Dropped Files option on the Miscellaneous page should be set to Insert image in list).
- Double-click on an image in Explorer (the Startup Files option on the Miscellaneous page should be set to Add images to list).

Removing images from the sequence

You can remove an image from the sequence by any of the following methods:

- The *File | Close* command will remove the current image from the sequence
- The *File | Close all* command will empty the sequence completely
- The *Edit | Cut file* will copy the current image file to the clipboard and remove it from the list

Rearranging images in the sequence

You can change the position of an image in the sequence as follows:

1. Use the *Edit | Cut* command to remove the image file and copy it to the clipboard.
2. Use the *Edit | Paste* command to insert the image where you want it.

Saving the image sequence to a file

You can save the current image sequence to a file using the *File | Save sequence as...* command.

Recalling an image sequence from a file

You can read the images stored in an image sequence (.AIS) file using the *File | Open* command. You will need to change the *Files of type*: selection to *Image sequences*. You can also open an image sequence by double-clicking on the file in Explorer or ACDSee's browser, dragging and dropping the .AIS file into the view area, or copying it to the clipboard and pasting it in.

Editing an image sequence file

An image sequence file is simply a text file containing the paths of the images in the sequence. Each line of the text file contains the path of one image. You can edit this file with Notepad by selecting the **Text edit** action from the shell menu for the file, or by dragging the file onto a Notepad window.

Creating an empty image sequence file

You can create a new, empty image sequence file in Explorer by clicking with the alternate mouse button and selecting *New | ACDSee Image Sequence* from the context menu.




Notes

When you return to browse mode from an image sequence, ACDSee will browse the folder for and select the last viewed image. You must press <Esc> to return to browse mode if you wish to return to the folder you opened the image sequence from.

Zoom

By default, an image is shown at its normal size. You can change the size using *zoom* commands.

Changing the zoom level

- You can enlarge the image using the *View | More* command , and reduce using the *Zoom | Less* command .
- The *Zoom | Actual size*  command will return the image to normal size.
- The *Zoom | Best fit* command will automatically size the image to fit the window or screen.

Zoom selection

You can select a rectangular region of the image by clicking and dragging with the primary mouse button. (If the image is larger than the view area, you must hold down <Shift> to make a selection.) Clicking inside the selection with the primary mouse button will zoom the image so that the selection takes up the entire available view area. The selected region is then deselected.

Zoom locking

Normally, the zoom level is returned to the default level each time an image is viewed. However, you can lock the zoom level using the *Zoom | Lock* command so that the zoom level does not change.

Auto zoom/shrink

The *Auto-shrunk to fit* and *Auto-zoom to fit* commands specify that ACDSee should automatically shrink or enlarge each image to fit the window or screen when it is displayed.

- If the *Viewer | Change window size to fit image* option is active, images are shrunk or enlarged to fit the screen. Otherwise, images are shrunk or enlarged to fit the window.
- If *Auto-shrunk to fit* alone is active, then large images are reduced but small images are not enlarged.
- Conversely, if *Auto-zoom to fit* alone is active, small images are enlarged but images are never shown below normal size.

Panning / scrolling

If an image is larger in one or both dimensions than the view area, it can be scrolled to see different areas of the image. When this is the case, the mouse cursor will change to a hand shape.

Using the mouse

You can pan using the mouse by dragging the image with the primary mouse button held down.

Using the keyboard

The cursor keys can be used to scroll in the respective directions. Hold down <Shift> to decrease scroll speed and <Ctrl> to increase scroll speed.

Selection

You can select a rectangular portion of the image by holding down <Shift> and dragging with the primary mouse button down to define the selection. The current selection is indicated by a dotted outline around the region.

- If the image is not scrollable, you do not need to hold down <Shift> to make a selection.
- While defining a selection, you can cancel by pressing <Esc>.
- To deselect the current selection, hold down <Shift> and click with the primary mouse button, or use the *Edit* | *Select none* menu command.

Once you have made a selection, you can:

- zoom the selected region by clicking inside the region with the primary mouse button
- print the selected region
- copy the selected region it to the clipboard
- set the selected region as desktop wallpaper


Slide show

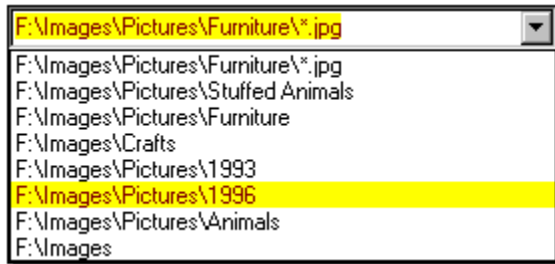
ACDSee can show a sequence of images as a slide show, each image being shown for some predetermined time before going on to the next.

Starting a slide show from browse mode

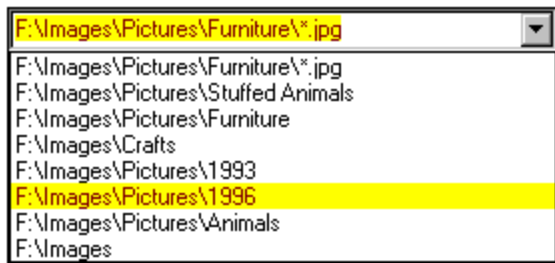
The *Tools | Slide show* and *Tools | Slide show recursive* commands will show all images in the selected folder(s). If there are no folders selected, but more than one image is selected, then these images will be shown. If there is only one image selected, or no images selected, then all images in the current folder will be shown in the slide show. The *Slide show recursive* command also includes images in subfolders. Hidden files and folders are included in the slide show only if the *File List | Show hidden files* option is enabled. These commands are also available from the context menus for folders in the folder tree, file list and Favorites list.

Starting a slide show from view mode

You can start a slide show whenever more than one image is in the current *image sequence* using the *Tools | Slide show | Run* command . Invoking the command again will stop the slide show. The slide show will automatically stop when you use the *Previous*



and *Next*



commands, or when you minimize the view window.

You can specify the slide show delay, order and other options in the *Slide Show* page of the *Options* dialog.

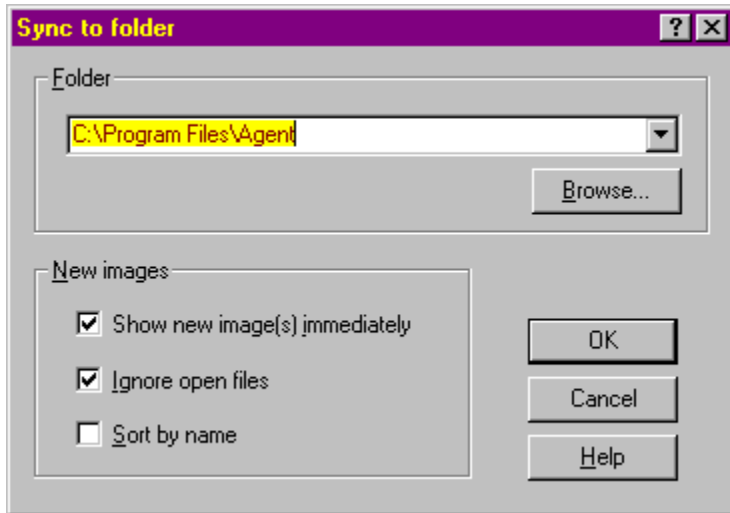
See also: [Sync to folder command](#).

Sync to folder

The *Tools* | *Sync to folder* command, available only from view mode, will synchronize the image sequence with the contents of a folder. Initially, all images in the folder will be entered in the image sequence. Then, as image files are added or removed from the folder, they are automatically added or removed from the image sequence, respectively.

Example uses:

- If you sync to the attachments folder of your newsreader, ACDSee will automatically display images as they are decoded.
- Used in conjunction with the Slide show feature, ACDSee can display a looped slide show whose content can change over time, simply by adding and removing images from the designated folder.



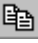
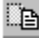
Use the *Show new image(s)* option when you want to view new images as soon as they appear in the folder. Otherwise, new images will be added to the end of the image sequence but the currently viewed image will not change.

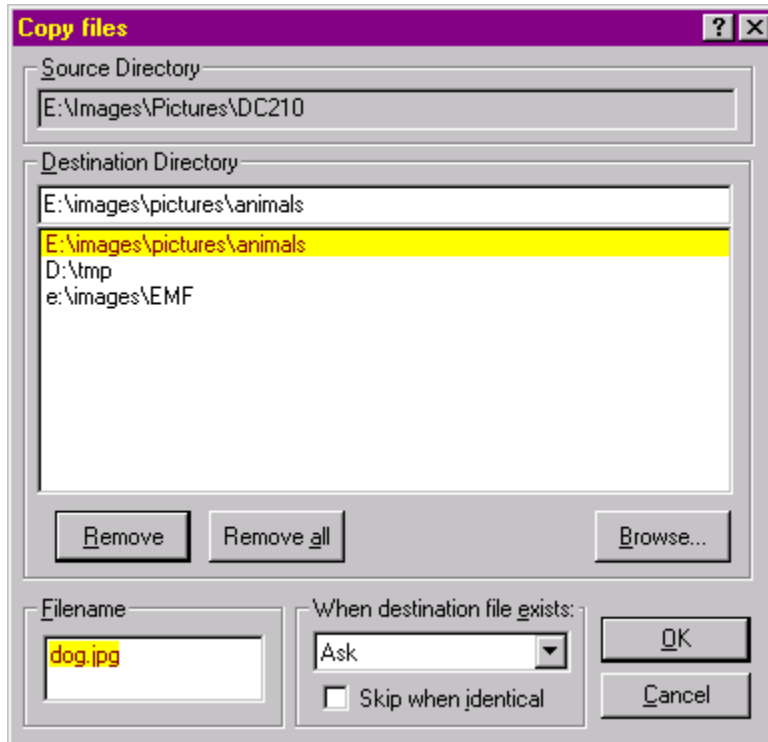
Use the *Ignore open files* option to avoid adding a new file to the current image sequence until the other application (e.g., newsreader) has completed transferring the file.

Use the *Sort by filename* option to keep the file list sorted by filename.

Note: You can have ACDSee synchronize to a folder on startup by using the */sync* command line switch.

Copy to / Move to

The *Copy to*  and *Move to*  commands allow you to copy or move one or more files to a different folder. Upon invoking the command, a dialog box appears allowing you to specify the target folder.



- A list of most recently used target folders is shown to allow you to quickly select a target.
- You can specify what to do if there is a filename collision – if a file in the target folder has the same name as one of the files being copied or moved.
- If you are copying or moving a single file, you can specify a different filename to use.

Cut, copy and paste files

The *Copy*, *Cut* and *Paste* commands can be used to copy and move files between folders.

To copy one or more files

1. Make the selection and then select *Edit | Copy* from the menu.
2. Browse to the folder where you want to place the selected file(s).
3. Select *Edit | Paste*.

To move one or more files

1. Make the selection and then select *Edit | Cut* from the menu.
2. Browse to the folder where you want to place the selected file(s).
3. Select *Edit | Paste*.

You can also copy, cut and paste files between ACDS*ee* and Explorer. However, if you paste files into Explorer, the file descriptions will not be preserved.

The *Filing* tab of the *Options* dialog contains several options that determine what ACDS*ee* does when there is a filename collision – if a file in the target folder has the same name as one of the files being copied or moved.

Drag and drop

You can select one or more items in the file list or folder tree, and then drag and drop them somewhere else.

To copy files or folders

1. Make the selection
2. Drag the selection with the alternate mouse button and drop it onto a folder or shortcut to folder in the file list, folder tree or Favorites list.
3. Select *Copy here* from the context menu.

To move files or folders

1. Make the selection
2. Drag the selection with the alternate mouse button and drop it onto a folder or shortcut to folder in the file list, folder tree or Favorites list.
3. Select *Move here* from the context menu.

You can also drag the selection with the alternate mouse button. If you drop the selection into a folder on the same disk partition the files are moved by default. If you drop the selection into a folder on a different disk partition, the files are copied. The mouse cursor will show a plus sign if the files will be copied. You can force the files to be moved by pressing <Shift>, and force them to be copied by pressing <Ctrl>.

The *Filing* tab of the *Options* dialog contains several options that determine what ACDS_{ee} does when there is a filename collision – if a file in the target folder has the same name as one of the files being copied or moved.

To create shortcuts to files or folders

1. Make the selection
2. Drag the selection with the alternate mouse button and drop it onto a folder or shortcut to folder in the file list, folder tree or Favorites list.
3. Select *Create shortcuts here* from the context menu.

If you want to create shortcuts in the Favorites list, you can drag the files or folders using the primary mouse button and drop them onto the background of the Favorites list.

To open files with an application in the Favorites list

1. Make the selection
2. Drag the selection with the primary mouse button and drop it onto the application shortcut.


Special drag & drop features

- When are dragging an object within ACDS_{ee}, you can position the mouse near one of the borders of the target window in order to scroll in the corresponding direction. The scroll speed is proportional to the distance from the border.
- If you are dragging items into the folder tree, you can expand or collapse the currently highlighted folder by either pressing <Space> or the other mouse button (e.g., click with the right mouse button if you are dragging with the left).

Renaming files and folders

You can rename files and folders in the file list, folder tree and Favorites list.

To rename a file or folder

1. Select the item
 2. Select *Edit | Rename*  from the menu
 3. Enter the new name
 4. Press <Enter>
- You can also rename an item by selecting it, waiting a moment, and clicking on the name with the primary mouse button. However, there is a Browser option to turn off this feature.
 - You cannot rename a drive or any file on a read-only file system such as a CD-ROM.

See also: [Rename series](#)

Deleting files

You can delete a file, folder or shortcut by selecting it and using the *Edit | Delete*  command.

The Filing tab of the Options dialog allows you to specify whether or not to use the recycle bin when deleting files, and whether or not to ask for confirmation before deleting.

You can bypass confirmation by holding down <Ctrl> when invoking the Delete command.

You can bypass the recycle bin by holding down <Shift> when invoking the Delete command.


Describing files

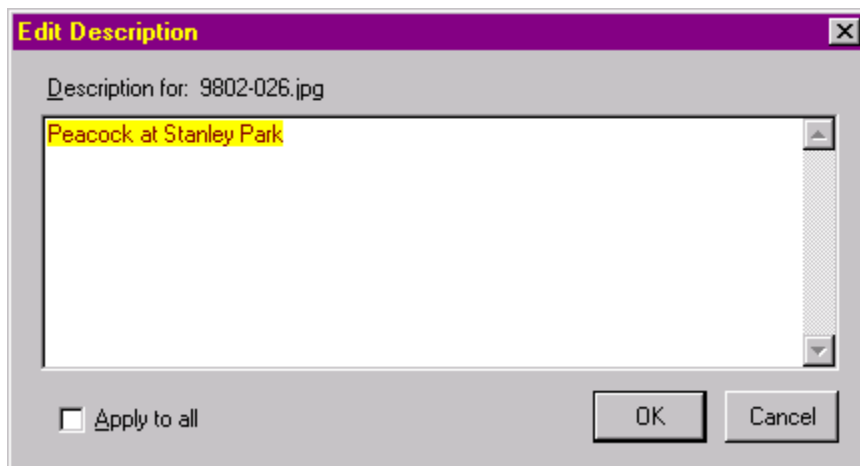
You can attach file descriptions to files and folders. File descriptions are used by a few other application programs (such as JPSoft's 4DOS/4NT) but are not supported directly by Windows. The file descriptions are stored in a hidden file called "descript.ion". There is one such file for each folder. If you copy, move or rename files using ACDSee, the file descriptions remain attached to the files.

Important: Copying, moving or renaming files using other programs, such as Explorer or the MS-DOS command prompt, *will cause file descriptions to be lost!*


- Each file description can be up to 3800 characters long.
- Carriage returns and line feeds are not allowed in file descriptions
- The file description for the currently selected file appears in the rightmost pane of the status bar.
- In browse mode, file descriptions also appear in the rightmost column in detail view and can be used to sort the files.
- Using ACDSee's *Find Images* command, you can search through your file descriptions for matching words and phrases in order to locate images.

To set/change a file description

1. Select the file you want to describe
 2. Select *Edit | Describe*  from the menu.
 3. Enter the new file description
- When the file list is in *detail* view mode, you can also double-click on a file description to edit it. However, there is a *Browser* option to disable this feature.
 - Files which reside on read-only file systems such as CD-ROM cannot be described.



To describe a group of files using the same file description

1. Select the files you want to describe
2. Select *Edit | Describe*  from the menu.
3. Check *Apply to all* at the bottom of the dialog box.
4. Enter the new file description

Thumbnails

When browsing, you can view images as thumbnails by selecting *View | Thumbnails* from the menu.

ACDSee will generate and display a thumbnail for each of the images in the current folder. You can set the size of the thumbnail using preferences on the *Thumbnails* options page.

Thumbnail Caching

Because thumbnail generation can be a time-consuming process, ACDSee provides a thumbnail caching feature. Whenever a thumbnail is generated for a source image, it is saved in a central database file. The next time ACDSee requires the thumbnail for that image, it can read the thumbnail directly from the database file rather than decoding the source image again. This greatly enhances the speed at which ACDSee gathers thumbnails. You can turn the thumbnail caching feature on via the *Thumbnails* options page.

If you modify an image whose thumbnail is cached, ACDSee will automatically detect the change and regenerate the thumbnail the next time it is displayed.

Thumbnails for image files on read-only and removable disks are also cached by ACDSee. ACDSee uses the volume label of a removable disk to identify it. Therefore, you can have several disks of images, possibly with the same names, and ACDSee will be able to correctly cache the images on each without conflict.


When you delete image files with ACDSee, the corresponding thumbnails are removed from the database to reclaim the space used. However, if you delete, move or rename image files with Explorer, the thumbnails are not removed and space is wasted. If your thumbnail database file becomes too large, you can simply delete it and ACDSee will create a new one for you.

You can only use the cached thumbnail database with one instance of ACDSee. e.g., If you start two ACDSee browsers, one the first one can read thumbnails from the cache. The second one will generate the thumbnails anew.


Along with thumbnails, ACDSee also caches the image properties for every file in ever folder you browse. This enhances the speed at which ACDSee gets image information. See also: [cache in description](#) option.

Printing images

From browse mode

1. Select one or more image files.
2. Select the *File | Print* command .
3. Follow the instructions in the *Print Setup* and *Print* dialogs.
4. The selected images will be printed, one per page.

From view mode

1. Select the *File | Print* command , or the *File | Print all* command.
2. Follow the instructions in the *Print Setup* and *Print* dialogs.
3. The current image will be printed.
 - By default, the image is printed at approximately the same size as it appears on the screen. You can alter the size of the printout by adjusting the zoom level prior to printing.
 - If you want to print only part of an image, select the region prior to invoking the *Print* command.


If an image contains more than one page, you can specify in the Print dialog box which pages should be printed. When printing from browse mode, all pages are printed by default. When printing from view mode, however, only the current page is printed by default.

From Explorer



1. Click on the image file with the alternate mouse button
2. Select *Print with ACDSsee* from the context menu

Note: If there is no *Print with ACDSsee* command in the context menu, go into the *Miscellaneous* tab of ACDSsee's *Options* window and click *Set file associations...* From here, check off the relevant file types and check the *Print with ACDSsee* shell command item.

Wallpaper

The *Wallpaper* commands  allow you to set the wallpaper shown on the Windows desktop to any image. The selected image is first converted to BMP format and then saved in the Windows folder as “ACD Wallpaper.bmp”. ACDSee then changes the wallpaper settings in Control Panel to display this image.

Tiled, Centered and Restore

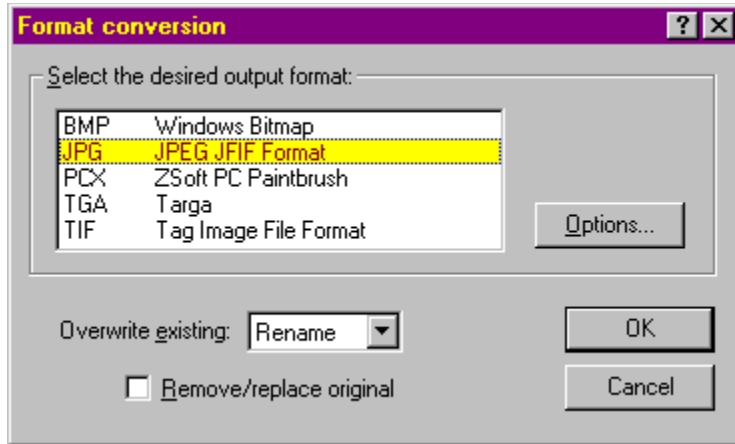
- Hold down <Shift> when you click on  to have the wallpaper **tiled** rather than **centered**. Or select the corresponding command from the *Tools | Wallpaper* menu.
- To **restore** the wallpaper that was in effect before you used the wallpaper command, hold down <Alt> and click on . Or select the corresponding command from the *Tools | Wallpaper* menu.

Notes

- If the image is larger than the screen, it will be shrunk to fit.
- In view mode, you can set the desktop wallpaper to part of an image by selecting the region of interest before invoking the wallpaper command.

Convert


The *Tools | Convert* command will convert the selected image(s) to another format. This command is only available in browse mode; to convert an image from view mode, use the *File | Save as...* command.

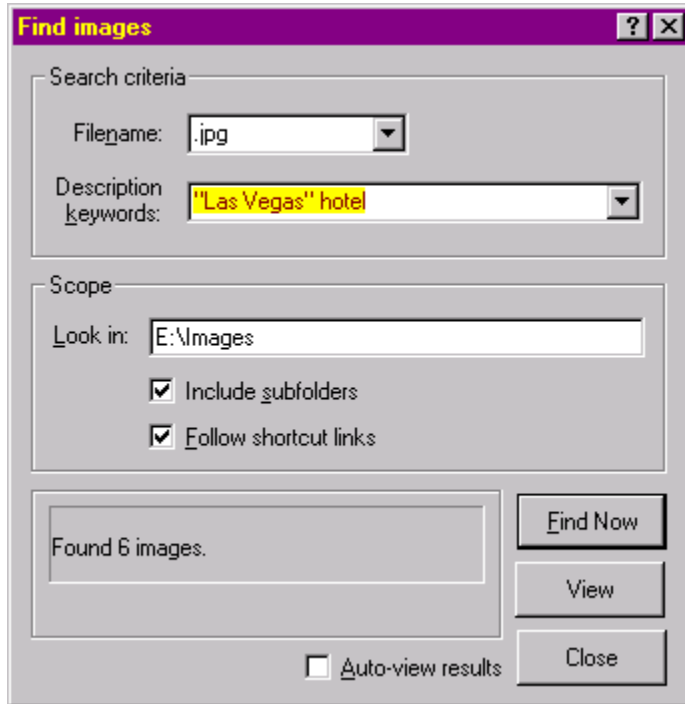


The desired output format can be selected from the list. Some formats have encoding options that can be adjusted by clicking on the *Options* button.

The converted image is written to a file with the same name as the original, but with an extension matching the selected format. Should the output file already exist, the action taken is determined by the selection made in the *Overwrite existing* list. If the *Replace original* box is checked, the source file is deleted after a successful conversion.

Find images

The *Tools* | *Find images* command  can be used to search for image files that match file name or description keywords.



Search scope

The scope of the search is limited to the selected folders, or, if no folders are selected, the current folder. The command can also be invoked from the context menu of a file folder or file folder shortcut. If a single folder was selected, the scope can be modified by typing a new path into the *Look in* box.

The *Include subfolders* and *Follow shortcuts* checkboxes allow the search to be recursive – to include subfolders as well.

Hidden files and folders are included in the search only if the *File List* | *Show hidden files* option is enabled.

Search criteria

File name patterns

One or more file name patterns can be entered in the *Filename* box to limit the search to files with matching names. A match will occur if a file name matches **any** of the given patterns. If a pattern does not specify a file extension, any file extension will match.

Description text

Description keywords, portions of keywords, and phrases can be entered in the *Description keywords* box. These are separated by spaces, and phrases enclosed in quotes. **All** keywords and phrases must be in a file's description in order to match.

If you also enter both a filename pattern and description text, then an image must meet *both* sets of criteria in order to match.

Displaying search results

The search is started by clicking on the *Find Now* button. When the search is complete, the number of matching images found is displayed. The matching images can then be displayed by clicking on the *View* button. If the

Auto-view results option is checked, then the results will automatically be viewed after the search completes if any matches are found.

The matching images are shown in view mode as an image sequence. To return to browse mode and perform another search, press <Esc>. (Returning to browse mode using the *File | Browse* command will change the current folder to that of the currently viewed image)

Shell commands

Windows allows you to associate a number of *actions* for each file type. The default action is usually **open**, which is normally invoked when you double-click on an image in Explorer. ACDSee also supports most actions, including **open**.

To invoke a shell action

In browse mode, click on the file with the alternate mouse button and select *Shell | <action>* from the context menu. To invoke the **open** action, you can alternatively select *Tools | Shell | Open* from the main menu in either browse or view mode. Similarly, you can select *Tools | Shell | Edit* from the menu to invoke the **edit** action.

To set or modify the open and edit actions

If the **open** or **edit** action is invoked, but it is not defined, ACDSee displays a dialog box that allows you to select the application to handle the action. You can also bring up this dialog to change the application for an existing action by selecting the *Tools | Shell | Open with* or *Tools | Shell | Edit with* command.

You can also set these and other actions by using the *View | Options* command of Explorer and clicking on the *File Types* tab.

Generate file listing

The *Generate file listing* command allows you to get a textual listing of the contents of the current folder. You can then print, save or edit the listing.

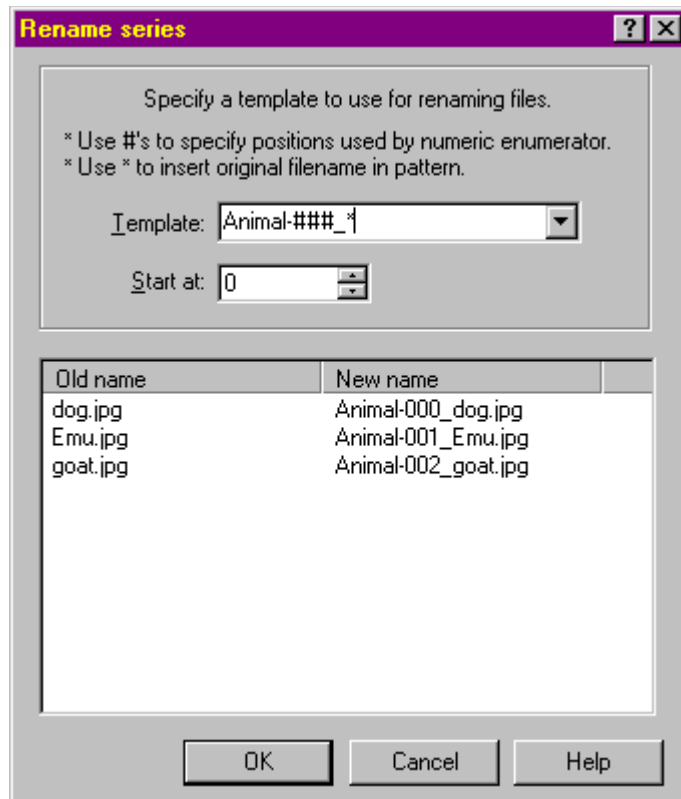
The information included in the listing is the same information shown in *detail* view mode. The sort order of the listing, the columns shown and the order of the columns matches the respective settings of the file list.

The generated file list text is saved to a file in the designated TEMP directory and opened using the default text editor (normally Notepad).

Rename series

You can rename a group of files according to a numbered series. For example,

Original names: Dog.jpg, Emu.jpg, Goat.jpg, ...
New names: Animal-01.jpg, Animal-02.jpg, Animal-03.jpg, ...



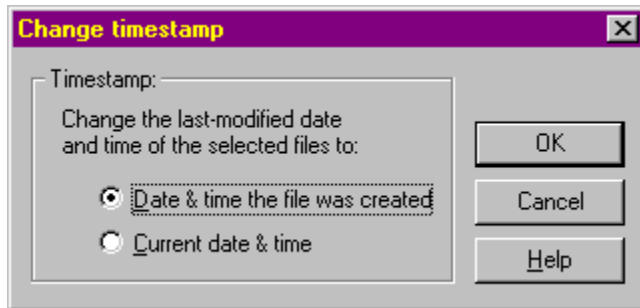
1. Select the files
2. Select *Tools* | *Rename series* from the menu
3. Enter the template in the box provided
4. Specify the starting index
5. A table at the bottom of the dialog box indicates the file name changes that will take place.
6. Click OK.

- Initially, the template and starting index are formed based on the first selected file name.
- If you double-click on a file name in the left column, the current template and starting number will be reset based on the selected file name

See also: [Rename](#)

Timestamp command

You can change the last-modified timestamp of a file or group of files by selecting the files and invoking the *Tools | Timestamp* command. You can set the last-modified timestamp either to the creation timestamp (date and time when the file was created), or to the current system time.



JPEG Rotate command



The *JPEG rotate* command is available from the *Tools* menu.

The lossless JPEG rotate command allows you to rotate a JPEG image, or group of JPEG images without decompressing and recompressing and re-quantizing the JPEG information. This means that no quality is lost in the transformation. (However, odd-sized images will be cropped to the nearest multiple of 8 or 16 in each dimension).

Click on the rotation buttons until the preview is in the desired orientation, and then click on OK to rotate the image.

If you are rotating a group of images, you can turn on the "Apply now" box, in which case the same rotation will be applied to all images. Otherwise, you will be prompted to specify a rotation for each image. The actual rotations take place as a batch operation after all rotations are specified.

Quick rotation

You can also apply a quick rotation to an image or group of selected images directly from browse or view mode (i.e., without bringing up a dialog box) by using the following keyboard shortcuts:

- Alt+Cursor Left 90 degrees counter-clockwise
- Alt+Cursor Right 90 degrees clockwise
- Alt+Cursor Up/Down 180 degrees

Digital camera support

ACDSee supports reading images directly off a Kodak DC200 or DC210 camera.

Browse camera

ACDSee can browse the images on the camera as if the camera were part of the file system. You can then perform the following commands on the images on the camera:

Copy/Move to	Copy or move images to a file system folder.
Copy/Cut/Paste	Copy or cut images to the clipboard and past into a file system folder (must paste within ACDSee).
Drag and drop	Copy or move images to a file system folder, or copy to a temporary folder and open with an application (must drag within ACDSee).
View	Copy image to a temporary folder and view.
Delete	Delete the images from the camera.

Transfer files from camera

The *Tools | Kodak DC200/210 | Transfer all* command can be used to quickly transfer all images on the camera into the current folder. The images are removed from the camera after transferring successfully.

Note: The digital camera commands are disabled if the Kodak DC210 support library cannot be found or was not installed when ACDSee was set up. To install the support you can run the ACDSee Setup program again.

Browse mode keyboard shortcuts

Keyboard shortcuts

Key	Function
F1	Help.
F2 or Alt + R	Rename.
F3	Find images.
F4	Open the most recently used folders list
F5	Refresh the list of files. <i>Shift key: quick refresh.</i>
F6	Access the drop-down list of favorites.
F8 - F12	Change view to Thumbnails, Large Icon, Small Icon, List or Details.
Backspace	Move up one folder.
DEL	Delete. <i>Shift key: bypass recycle bin.</i> <i>Ctrl key: bypass confirmation.</i>
Enter	File list - View the selected files. <Shift> for new window. Path box - Browse the specified folder Favorites list - Open the selected shortcut
Esc	Stop generating thumbnails and reading image header information. (In path box) return focus to list view.
Shift + Esc	Minimize window.
Pause	Continue generating thumbnails and reading image header information.
Alt+Cursor Left, Right, Up/Down	Rotate the selected JPEG images 90 degrees counter-clockwise, 90 degrees clockwise, and 180 degrees, respectively.
Ctrl + Shift + Cursor Left, Down, Right	Set preview position to the left, below, and to the right of the file list, respectively.
Tab	Move between the path box, folder tree, file list and Favorites list
Ctrl	Hold down Ctrl key to select multiple files. Press <Space> or click with mouse to tag individual files.
Ctrl + A	Select all files. <i>Shift key: select all files and folders.</i>
Ctrl + C	Copy selection to clipboard. <i>Shift key: copy image data to clipboard.</i>
Alt + C	Copy files to another folder.
Ctrl + D	Describe.
Ctrl + E	Shell edit. <i>Shift key: specify application to edit with.</i>
Ctrl + F	Convert image to another format.
Ctrl + G	Generate ASCII file listing
Ctrl + H	Toggle the display of hidden files.
Ctrl + I	Toggle the display of image files only.
Ctrl + K	Browse digital camera.
Ctrl + Shift + K	Move files from digital camera.
Ctrl + L	Shell open. <i>Shift key: specify application to open with.</i>
Alt + M	Move files to another folder.
Ctrl + O	Options.
Ctrl + P	Print the selected images.
Ctrl + R	Rotate the selected JPEG images.
Ctrl + S	Slide show all.
Ctrl + Shift + S	Slide show all, including subfolders.
Ctrl + T	Timestamp.
Ctrl + V	Paste files from the clipboard into the current folder.
Ctrl + Shift + V	Preview the selected image.
Ctrl + V	Paste from clipboard.
Ctrl + W	Set desktop wallpaper. <i>Shift key: tile wallpaper.</i>
Alt + W	Restore original desktop wallpaper.
Ctrl + X	Cut selection to clipboard.

Alt + X	Quit.
Ctrl + Shift + T,B,M,D,F,Q,P	Toggle display of toolbar, status bar, menu bar, current folder path box, folder tree, shortcuts and preview, respectively.
Num 0-6	Sort by extension, name, size, type, date, image dimensions or description.
Ctrl + Num 2-6	Toggle the display of size, type, date, image dimensions or description in detail view.
Num +/-	Sort in forward/reverse direction
	Folder tree: Expand/collapse selected folder.
Num *	Recursively expand the selected folder tree branch.
Ctrl + Num '+'	Automatically size columns in detail view.

Note: some commands allow the Alt key to be substituted for the Ctrl key, if you prefer to use the Alt modifier.

View mode keyboard and mouse shortcuts

Keyboard shortcuts

Key	Function
F1	Help.
F2	Rename.
F5	Reload.
Insert	Add images to <u>image sequence</u> .
DEL	Delete. <i>Shift key: bypass recycle bin.</i> <i>Ctrl key: bypass confirmation.</i>
Space/Backspace	Show next/previous image in slide show sequence.
Enter	Switch to the browser and select the current image.
Esc	Return to the browser without selecting current image, or quit.
Shift + Esc	Minimize window.
Pause or Alt + S	Stop or resume timed slide show.
Cursor keys	Scroll image. <i>Shift key: scroll slower</i> <i>Ctrl key: scroll faster.</i>
Alt+Cursor Left, Right, Up/Down	Rotate the current JPEG image 90 degrees counter-clockwise, 90 degrees clockwise, and 180 degrees, respectively.
Page Up, Page Down, Home, End	Previous, Next, First, and Last image in image sequence, resp. <i>Shift key: navigate pages within a multi-page image.</i>
Alt + C	Copy to.
Ctrl + C	Copy current image (or selection) to clipboard.
Ctrl + D	Describe.
Ctrl + E	Shell edit. <i>Shift key: specify application to edit with.</i>
Ctrl + F	Toggle full screen mode.
Ctrl + L	Shell open. <i>Shift key: specify application to open with.</i>
Alt + M	Move to.
Ctrl + O	Options.
P	Temporarily display full path name of image file in status bar
Ctrl + P	Print. <i>Shift key: print all images.</i>
Alt + P	Save current window position.
Ctrl + Q	Remove current image from the image sequence.
Ctrl + Shift + Q	Remove all images from the image sequence.
Ctrl + R	Rotate the current JPEG image.
Ctrl + S	Save image. <i>Shift key: save image sequence</i>
Alt + S or Pause	Stop or resume timed slide show.
Ctrl + V	Paste files on the clipboard into the image list.
Ctrl + T	Timestamp.
Ctrl + W	Set the selected image as the desktop wallpaper. <i>Shift key: tile wallpaper.</i>
Alt + W	Remove original desktop wallpaper.
Ctrl + C	Remove current image from sequence and place in clipboard.
Alt + X	Quit.
Ctrl + Z	Selection zoom.
Ctrl + Shift + T,B,M	Toggle display of toolbar, status bar and menu bar, resp.
T, B, M	Temporarily toggle display of toolbar, status bar and menu bar, resp.
Num - or “-“	Zoom out.
Ctrl + Num -	Toggle automatic shrink-to fit option
Ctrl + Num +	Toggle automatic enlarge-to fit option
Num + or “=”	Zoom in.
Num * or *	Zoom to fit window/screen
Num / or /	Zoom 100%
Ctrl + Num /	Toggle zoom lock.


```

    return (HDEDEDATA) NULL;
}

int DDEView(const char* pszAppPath, // path to acdsee32.exe (can just use
                                   // "ACDSee32.exe" if ACDSee is installed
                                   // correctly)
            const char* pszFiles,  // path to image file(s) - each file must be
                                   // enclosed in quotes and separated by a space
            int         fAdd,       // 0=>replace, 1=>add, -1=>according to options
                                   // setting
            int         fViewAll)  // 0=>view all in folder, 1=>only this,
                                   // -1=>options setting
{
    DWORD idDDE=0;
    UINT err = DdeInitialize(&idDDE, (PFNCALLBACK) DdeCallback,
                            APPCLASS_STANDARD | APPCMD_CLIENTONLY, 0);
    if (err == DMLERR_NO_ERROR)
    {
        HSZ hszDDEService, hszDDETopic;
        HCONV hconv;
        hszDDEService = DdeCreateStringHandle(idDDE, "ACDSee 32", CP_WINANSI);
        hszDDETopic   = DdeCreateStringHandle(idDDE, "System", CP_WINANSI);
        hconv          = DdeConnect(idDDE, hszDDEService, hszDDETopic, NULL);
        if (!hconv && DdeGetLastError(idDDE)==DMLERR_NO_CONV_ESTABLISHED)
        {
            int rc = (int)ShellExecute(NULL, NULL, pszAppPath,
                                       "/v", "", SW_SHOWDEFAULT);
            if (rc <= 32) return rc;
            // try to connect to server every 50 ms for up to 1 second
            // (give server a chance to start up)
            for (int i=0 ; i<20 && !hconv ; i++)
            {
                hconv = DdeConnect(idDDE, hszDDEService, hszDDETopic, NULL);
                if (!hconv) err = DdeGetLastError(idDDE);
                Sleep(50);
            }
        }
        if (hconv)
        {
            char* pszCmd;
            char szVerb[80] = "open";
            if (fAdd != -1) lstrcat(szVerb, fAdd ? "-add" : "-noadd");
            if (fViewAll != -1) lstrcat(szVerb, fViewAll ? "-viewall" : "-noviewall");

            pszCmd = (char*)malloc(lstrlen(szVerb) + lstrlen(pszFiles) + 5);
            // wsprintf does not work with >1024 character strings
            wsprintf(pszCmd, "[%s(", szVerb);
            lstrcat(pszCmd, pszFiles);
            lstrcat(pszCmd, ")");
            DdeClientTransaction((BYTE*)pszCmd, lstrlen(pszCmd)+1, hconv, 0, 0,
                                XTYP_EXECUTE, TIMEOUT_ASYNC, NULL);
            err = DdeGetLastError(idDDE);
            free(pszCmd);
        }
        DdeFreeStringHandle(idDDE, hszDDEService);
        DdeFreeStringHandle(idDDE, hszDDETopic);
        DdeUninitialize(idDDE);
    }
    return err;
}

void main()
{

```

```
DDEView("ACDSee32.exe", "\c:\\images\\cat.jpg", \c:\\images\\dog.jpg", 0, 0);  
}
```


Window Messaging Interface

Although the DDE Interface of ACDSee only provides clients with the ability to open images, the Window Messaging Interface can be used for additional control.

Getting the window handle

To get the handle to ACDSee's view window, make the following Win32 call:

```
HWND hwnd = FindWindow("ACDViewer", NULL);
```

Since the window handle returned may be for an ACDSee instance that is currently in browse mode, you should check to make user the window is visible:

```
IsWindowVisible(hwnd)
```

If no window is available, you should run ACDSee in view mode:

```
ShellExecute(NULL, NULL, "ACDSee32.exe", "/v", "", SW_SHOW);
```

Once you have the window handle, you can use it to send various Win32-defined messages.

Issuing commands

Once you have a valid handle to ACDSee's view window, you can send it messages using

```
SendMessage(hwnd, <message-id>, <wparam>, <lparam>);
```

You can programmatically invoke various user menu commands using the WM_COMMAND message:

```
SendMessage(hwnd, WM_COMMAND, MAKELONG(<cmd-id>, 0), NULL);
```

The following table lists identifies for the various menu commands:

Menu command	cmd-id
File Open	20257
File Save as	20339
File Save sequence as	20340
File Close	20250
File Close all	20252
File Print setup	20276
File Print	20258
File Print all	20347
File Browse	20154
File Exit	20115
Edit Copy to...	20290
Edit Move to...	20291
Edit Cut file	20287
Edit Copy image	20259
Edit Paste files	20283
Edit Delete	20261
Edit Select none	20336
Edit Rename	20262
Edit Describe	20263
View Page Next	20222
View Page Previous	20223
View Page First	20224
View Page Last	20225
View Image Next	20148
View Image Previous	20147
View Image First	20161
View Image Last	20162
View Full-screen	20149
View Save window pos	20321
View Reload	20151
Zoom More	20152
Zoom Less	20153
Zoom Best fit	20233

Zoom Actual size	20234
Zoom Lock	20320
Zoom Auto-shrink to fit	20318
Zoom Auto-enlarge to fit	20319
Tools Slide show Run	20150
Tools Slide show Show next image	20270
Tools Slide show Show previous image	20273
Tools Set wallpaper Centered	20265
Tools Set wallpaper Tiled	20266
Tools Set wallpaper Restore	20267
Tools Shell Open	20116
Tools Shell Edit	20108
Tools Shell Open with	20166
Tools Shell Edit with	20167
Tools Change timestamp	20351
Tools JPEG Rotate	20352
Tools Sync to folder	20349
Tools Options	20112
Minimize window	20163

System administrator options

ACDSee allows customization of several flags that control aspects of the view mode user interface.

DisableBrowser	Prevent user from using browse mode.
DisableOpen	Prevent user from using the Open and Remove commands
DisableFileOps	Prevent user from using Copy to, Move to, Delete, Rename and Describe commands.
DisableWallpaper	Prevent user from using Wallpaper commands.
DisablePrint	Prevent user from using Print commands.
DisableOptions	Prevent user from using Options command.
DisableOptionsSave	Prevent changes made to options from being saved.

ACDSee does not provide a way to change these options. The procedure outlined below changes these options directly by modifying the corresponding entries in the system registry.

1. Start NotePad.
2. Copy the text below and paste it into notepad.
3. For each item you wish to disable, change the "00" to "01".
4. Save the file as *options.reg*
5. Open Explorer, right click on the saved *options.reg* file, and select **Merge** from the context menu.

```
-- cut here --
REGEDIT4

[HKEY_CURRENT_USER\Software\ACD Systems\ACDSee32]
"DisableBrowser"=hex:00
"DisableOpen"=hex:00
"DisableFileOps"=hex:00
"DisableWallpaper"=hex:00
"DisablePrint"=hex:00
"DisableOptions"=hex:00
"DisableOptionsSave"=hex:00
-- cut here --
```

How to run a slide show

You can perform a slide show whenever more than one image is in the *image sequence*.

In the status bar of the view window there is an indicator reading “*iln*”, where *n* denotes the number of images in the list and *i* denotes the sequence number of the currently viewed image.

There are several ways to add multiple images to the image sequence:

Slide show browser commands

1. Browse a folder containing images
2. From the *Tools* menu, select *Slide show* or *Slide show recursive*

The *Slide show* command will show all images in the selected folder(s). If there are no folders selected, but more than one image is selected, then these images will be shown. If there is only one image selected, or no images selected, then all images in the current folder will be shown.

The *Slide show recursive* command behaves similarly, but will also search subfolders.

Hidden files and folders are included in the slide show only if the *File List | Show hidden files* option is enabled.

These *Slide show* commands are also available from the context menus for folders in the folder tree, file list and Favorites list.

Multiple file selection

If you select several images in the Browser, each of these will be added to the image sequence when you enter view mode.

View all option

By checking the *Viewer | View all images in folder* option, all images in the folder containing the image you clicked on will be added to the image sequence. This option is turned on by default.

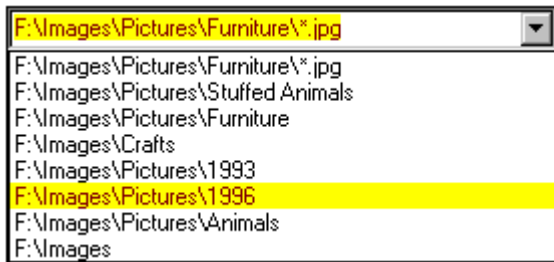
Adding files while in View mode

While you are in the View mode, you can add images to the image sequence using the following methods:

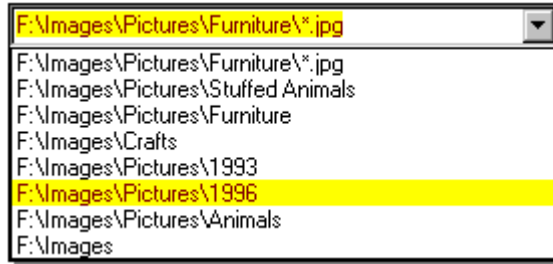
- Select *File | Open...* from the menu
- With the *Dropped files* option set to “*Add images to list*”, drag an image file and drop it on the window
- With the *Startup files* option set to “*Add images to list*”, launch an image file from another application

Starting and stopping the slide show

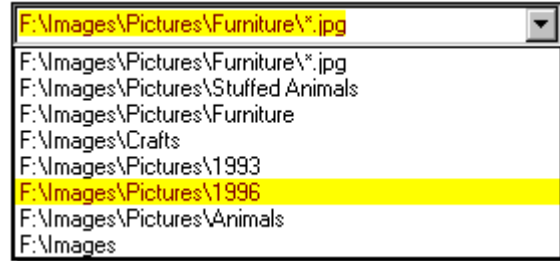
- Depending on how you have set the *Slide show | Auto-start* option, you may have to press



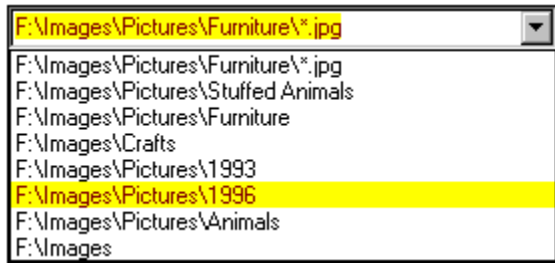
to start the slide show.



- To stop the slide show, press



- The slide show will automatically stop when you use
and



, or when you minimize the window.

How to view images in full-screen mode

In full-screen mode, the window borders, menu bar, status bar and tool bar are hidden and the window is expanded to fill the screen, so that only the image is visible on your monitor.

Procedure

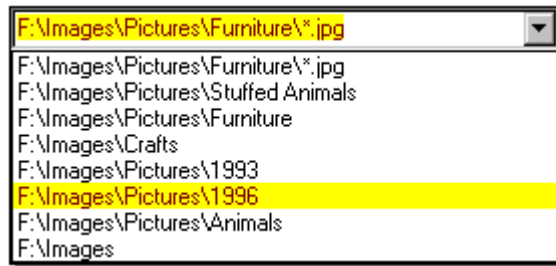
1. Bring up the image in view mode
2. Press Ctrl+F
3. The tool bar buttons are hidden, but you can still access the commands via shortcut keys or by clicking with the alternate mouse button
4. To return to normal mode, press Ctrl+F again

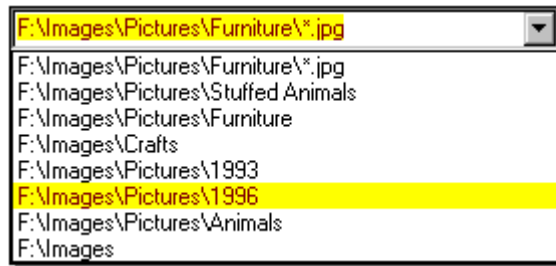

Notes

- You can toggle between full-screen and normal modes using the mouse by clicking the middle button, or by holding down the primary button while clicking the alternate button.
- In full-screen mode, you can press the , <T>, and <M> keys to temporarily show the status bar, tool bar, and menu bar, respectively.

How to customize ACDSee

Procedure



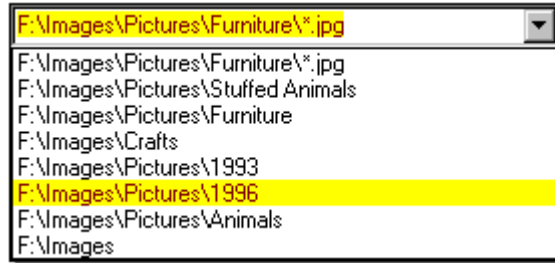
1. Click on . The *Options* dialog box appears.
2. To get help about any option, click on it with the alternate mouse button or click on the  button on the title bar and then click on the option.
3. Set the options.
4. Click *OK* to apply your changes temporarily, or *Save defaults* to apply them permanently.

Some settings can also be changed using commands under the *View* menu. Most of these settings are automatically saved permanently.

How to read image files with nonstandard filename extensions

By default, ACDSee assumes that all image files end with the conventional file extensions (.BMP, .JPG, etc.) If an image file has some other file extension, ACDSee will think that it is not an image. However, you can specify that ACDSee should determine whether or not files are images by actually reading the header of every file.

Procedure



1. From browse mode, click on
2. Set the *File list | Reading image information* option to one of the selections other than *Never*

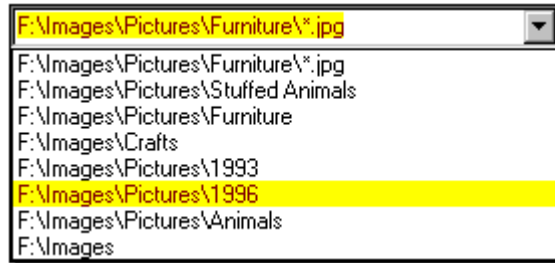
With this option in effect, ACDSee will scan the file headers whenever a folder is entered. A progress indicator in the status bar reflects this process. The scanning takes place as a *background process*; that is, you can still select files, preview images, etc. while scanning is taking place. To stop scanning, hit <ESC> or double-click on the progress bar. To resume scanning again press <Pause> or double-click on the progress bar again.

When ACDSee checks the files, it also retrieves the image format and dimensions which can be displayed in detail view and on the status bar as you select images.

Caching header information

You can get ACDSee to cache the file header information. The file headers then only need to be scanned when the files change. This makes the process much faster. The header information is stored in the same file as the file descriptions; this is a hidden file called "descript.ion".

To have ACDSee cache image header information:

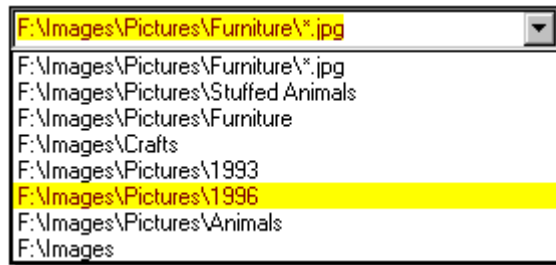


1. From browse mode, click on
2. Set the *File list | Cache in descript.ion* option.

How to run ACDSee automatically from other programs

Often it is convenient to use ACDSee as a “helper” application for viewing images from other applications. When you installed ACDSee, you were presented with a list of file types which could be assigned to ACDSee. This list was automatically registered for you.

Sometimes another piece of software will “take away” the file associations from ACDSee. You can restore ACDSee as the associated application as follows:



1. Click on
2. Click on the *Miscellaneous* tab.
3. Click on *Set File Associations...*
4. Check off the file types you want associated with ACDSee and click *OK*.

To assign a type not in this list to ACDSee:

1. In browse mode, select a file corresponding to the type.
2. Select *Tools | Shell | Open with...* from the menu. A window entitled “*Open with*” appears.
3. Select “*acdsee32*” from the list.
4. Check the box at the bottom of the window that says, “Always use this program to Open this type of file”.
5. Click *OK*.

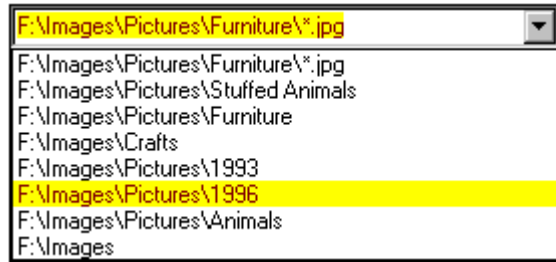
How to control the size and position of the viewing window

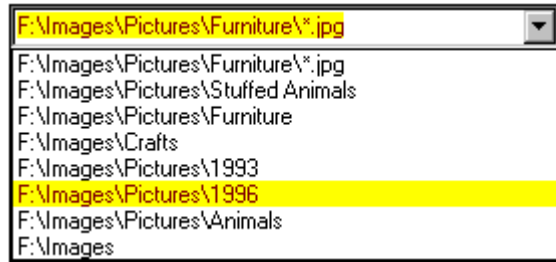
By default, the viewing window is automatically sized to fit the image displayed, and it is positioned in the center of the screen.

To have ACDSee position the window centered somewhere else:

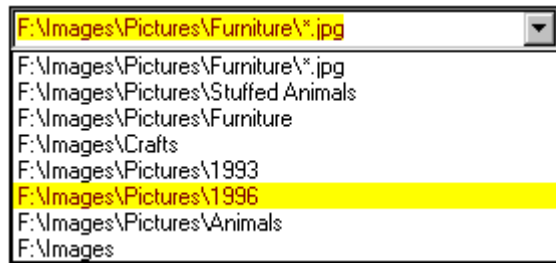
1. Position the window so that its center is where you want it
2. Select *View | Save window pos.* from the menu

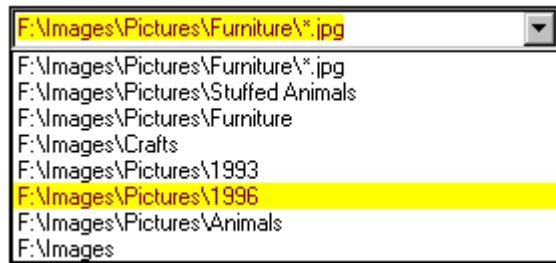
To have ACDSee always use a specific size and position:



1. Click on . The options dialog appears.
2. Uncheck the *Viewer | Change window size to fit image* option
3. Position the window where you want it.
4. Click on *Save defaults*
5. Select *View | Save window pos.* from the menu

To have ACDSee view in full-screen mode by default:



1. Click on . The *Options* window appears.
2. Check the *Viewer | Full-screen* option.
3. Click on *Save defaults*.

How to change the way files are sorted

You can specify what file information to use for the basic of sorting, and the direction (forward / backward) of the sort.

Clicking on the column headers

In detail view mode, you can sort file by a particular column by clicking on the corresponding header button above the file list. Clicking on the same column repeatedly will alternate between forward and reverse sorting. A '+' or '-' will appear next to the column currently being sorted on.

Menu

Select the desired sort method from the *View | Arrange Icons* menu.

Context menu

You can click with the alternate mouse button on the background of the file list to bring up a context menu. From here, select the desired sort method from the *Arrange Icons* sub-menu.

Shortcut Keys

You can press any of the keys <0> through <6> on the numeric keypad (you must have <Num Lock> turned on) to sort by file extension, name, size, type, date, image dimensions or description, respectively. Press <Num -> and <Num +> to set the sort direction.

The sort method is automatically preserved across sessions.

How to show/hide file list columns

In *detail* file list view mode, several columns of information are shown. You can customize which columns are shown.

Context menu

You can click with the alternate mouse button in the column headers area at the top of the file list to bring up a context menu that allows you to make each column visible or invisible. The name column is always visible.

Menu

Select *View | Show Columns* from the menu, and then the column you wish to show or hide.

Shortcut keys

You can press any of the keys <1> through <6> on the numeric keypad (you must have <Num Lock> turned on) while holding down <Ctrl> to toggle the display of the size, type, date, image dimensions and description columns, respectively.

The show/hide state of each column is preserved between sessions..

How to change the ordering of file list columns

In *detail* file list view mode, several columns of information are shown. You can customize the order in which the columns are shown.

Procedure

1. Click on the column's header with the primary mouse button, and drag it into the desired position.
2. The position where the column will be inserted is identified by a coloured vertical line.

The column order is automatically preserved between sessions.

How to launch document files

When you double-click on a file that ACDSee does not recognize as an image, ACDSee will launch the default associated application. This is the same thing that happens when you double-click on a file in Explorer.

The open and edit file actions

ACDSee allows you to set *two actions* for each file type. The *open* action is normally the default action used by Explorer and other programs. The additional *edit* action allows you to set up a secondary command. This feature is designed to allow you to invoke a different application for editing images, but you can use it however you like.

Setting the open and edit actions for a file type

1. In browse or view mode, select a file representing the type.
2. Select *Shell | Open with...* or *Shell | Edit with...* from the *Tools* or context menu. A window appears, allowing you to select an application to handle the action.
3. Check the box at the bottom of the dialog to make the association permanent, or clear the box to launch the file with the given application without saving the new association.
4. Click on OK.

Note: When you initially set up ACDSee as the default application for file types, either during setup or with the *Set file associations...* button in the *Options* window, ACDSee automatically sets the previously associated applications as the applications for the corresponding *edit* actions.

The Favorites list

You can add applications to the Favorites list in order to access them quickly from within ACDSee. To open a file with a specific application in the list, just drag the file and drop it on the application shortcut. For more information, see [How to use the Favorites list](#).

How to convert images to another format

In browse mode

1. Select one or more images in the browse mode.
2. Select the Tools | Convert command from the menu.
3. Choose the desired output format.
4. Some formats allow you to specify additional options.
5. Change the *Overwrite* and *Replace original* options as desired.
6. Click on *OK*.

In view mode

1. View the image you wish to convert current.
2. Select *File | Save as...* from the menu
3. Select the desired output format and options
4. Enter the output filename
5. Click on *Save*

If you select part of the image before saving, the saved image will be cropped to the selection.

Tip: Viewing multiple images simultaneously

Normally, the browse window will close when you switch to view mode. You can keep the browse window open while you open a view an image by holding down <Shift>. For example,

1. In browse mode, select an image.
2. Hold down Shift while you click on .
3. A new copy of ACDSee is started in view mode and the image is loaded.
4. Go back to the browse window, select a different file, and repeat from step 2.

or:

1. add a shortcut to ACDSee32 into the Favorites list
2. drag and drop the desired image files onto the ACDSee32 shortcut

Tip: Optimizing image display quality

Gamma correction

Ideally, every monitor would display an image the same way. Unfortunately this is not the case. Each make of monitor applies its own characteristic nonlinear transfer function to the pixels of an image when displaying it. For this reason ACDSee allows you to specify a gamma correction value. A gamma value of 1.0 is normal, with no correction. Lower gamma values will appear to darken the image, while higher gamma values will appear to lighten the image. Note that no gamma correction is ever applied when you print or copy an image. The gamma correction option is located on the *Display* options page.

Colour quantization and dithering

If you have a 256 or 32k/64k (high colour) display, 24 and 32 bit images with 16 million colours must be processed by ACDSee before being displayed to reduce the number of colours used. This two-stage process is called *quantization and dithering*. By selecting different quantization and dithering methods, you can trade off image quality against decoding speed. That is, higher quality output will cost you some extra decoding time.

True colour displays (16 million colours)

For true colour displays, ACDSee always gives you the highest quality output possible. No quantization or dithering is required.

High colour displays (32768 or 65535 colours)

For high colour displays, the available quantization and dithering methods are:

No dithering	Fastest, high quality output.
Ordered	A little slower, very high quality output. (default)

For many images, there is very little visible difference between these two methods. The superior output of the ordered dithering method is most noticeable in computer generated images. However, this option is recommended for general use since the difference in speed is hardly noticeable.

8-bit colour Displays (256 colours)

For 256 colour displays, the available quantization and dithering methods are:

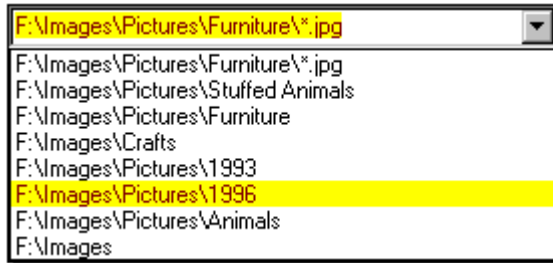
1-pass ordered	Fastest, reasonable quality output. (default)
1-pass Floyd-Steinberg	Somewhat slower, reasonable quality output.
2-pass Floyd-Steinberg	Much slower, good quality output.

In 2-pass Floyd-Steinberg dithering, the image is decoded in two passes. In the first pass, ACDSee decodes the image and determines the optimal colour palette. While this is being performed, the image is displayed using the 1-pass ordered method. In the second pass, ACDSee dithers the image using the optimal palette. After the second pass completes, the image is redrawn using the optimal palette. This method normally produces high quality output, but takes longer than the single pass methods.

Tip: Caching image information

If you use the *Reading image information* option, it may take a while for ACDSee to scan all the files when you browse a folder. You can configure ACDSee to cache this information in a hidden file called “*descript.ion*” (the same file that descriptions are stored in). This speeds up the scanning process immensely.

Procedure



1. In browse mode, click on
2. Click on the *File List* tab and check the *Cache in descript.ion* option.
3. Click on *Save defaults*.

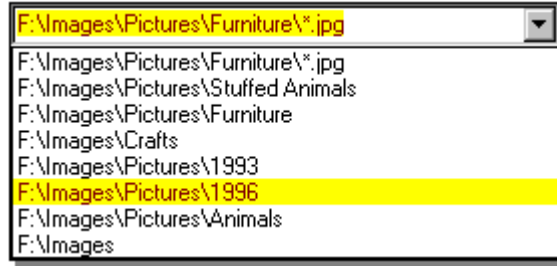
Notes

- The “Cache in descript.ion” feature will not work on read-only file systems.
- If you use the “Enable caching” thumbnails option, image dimensions are also automatically cached. This also works for read-only file systems.

Tip: Using a single window when used as a helper application

Normally, ACDSee starts a new program instance and view window each time an external application calls it to view an image. Hence if the external application calls ACDSee several times, several view windows are thus generated. You can instead configure ACDSee to use the same window for all images, thereby reducing the number of opened windows and system overhead.

Procedure



1. Click on
2. Select the option *Miscellaneous | Replace images in list* or *Miscellaneous | Add images to list*

Replace images in list will cause ACDSee to close all images in the current image sequence, thereby replacing them with the new image. *Add images to list*, on the other hand, simply adds the new files to the image sequence, thereby allowing you to navigate back to previously viewed images.

Note

The single-window feature will only work when ACDSee is invoked via DDE commands. ACDSee registers itself as a DDE server in the system registry for the appropriate file extensions when you install it, or when you ACDSee to make an association to itself with the *Open with...* command, or the *Set File Associations* dialog under *Options*. *If you make your associations to ACDSee with another program such as Explorer, they will not be set up correctly and single-window mode will not work! Use ACDSee's Set File Associations button to fix this problem.*

What is registration?

ACDSee is "Shareware". This means that we have made the software available to you for free evaluation. You are entitled to evaluate the software for up to 30 days without obligation to pay. After 30 days, if you decide to keep the software, you must register your copy with us for a small fee.

Shareware (non-registered) ACDSee is a "full-featured" release. This means that the same capabilities available in the registered software are present in the non-registered software. This allows you to try out all the features in ACDSee to confirm that they work to your satisfaction. In fact, the non-registered software includes a bonus feature - the **shareware nag box**. This is an added incentive for users to register the software rather than continue using it indefinitely without paying.

- [Why should I register?](#)
- [How can I register?](#)

Why should I register?

For many people, the most pressing reason to register is to get rid of the annoying nag box which pops up at the most inconvenient times.

But besides this, registration entitles you free technical support and minor upgrades to the software. Registration may also entitle you to discounts on new software releases from ACD Systems. We will also send you information bulletins by email to let you know about what's happening with ACD Systems' shareware products.

Finally, by registering the software, you provide us with the resources and incentive to support the software with updates and to develop additional quality shareware products in the future.

How can I register?

The registration fee for ACDSee 32 is \$40 US.

Registered users of *ACDSee for Windows 3.x* and PicaView can register ACDSee 32 for a discounted fee. See <http://www.acdsystems.com> for more information, or call 1-800-414-2237.

If you are part of a business and wish to use several copies of ACDSee within your company, greatly reduced [site licensing rates](#) are also available. For more information

For your convenience and protection, we provide the following secure methods of registration:

[Telephone](#)

[FAX](#)

[Internet](#)

[Postal mail](#)

See also:

[ACDSee order form](#)

[Licensing agreement](#)

[How to unlock the software](#)

Unlocking the software

Once you have registered ACDSee with ACD Systems, Ltd., you will receive a registration code that you can use to unlock the software:

1. Bring up the Registration Dialog selecting Register from the Tools menu.
2. Enter your name in the registration dialog.
3. A pre-registration code appears. This is a numerical encoding of your name. ACD Systems may require you to state this number, along with the product ID, if you register by telephone.
4. Enter your registration code in the box provided.
5. Click on OK

If you entered your name and registration code correctly, you will be thanked and the software will unlock itself. Otherwise you will have to try again.

Getting a multiple-user site license

If your company or institution is interested in licensing ACDSee for several users, you can save a lot of money by purchasing a site license. The program is licensed to your company for use at a single site with the agreed upon number of users.

The pricing schedule for site licenses can be found on the WWW at:
<http://www.acdsystems.com>

If you are interested in arranging a site license, please give us a call at 1-250-382-5828, fax 1-800-819-2207, or e-mail *acdsales@acdnet.com*.

ACDSee 32 v2.41 Order Form

USA
ACD Systems, Inc.
Suite 100, 2201 North Collins
Arlington, TX 76011

Canada
ACD Systems, Ltd.
PO Box 730
Victoria, BC Canada V8W 2P9

North America
Phone: 1 (800) 414 2237
Fax: 1 (800) 819 2207

International
Phone: 1 (250) 382 5828
Fax: 1 (250) 382 7099

Date _____

Name _____

Company _____ Phone _____

Street _____ FAX _____

City _____ State/Province _____ Country _____ Zip/PC _____

Email _____ @ _____

All Amounts Are United States Dollars

License: Single user license = \$40.00

Diskette (optional) shipping and handling
U.S. & Canada _____ @ \$4.95 = _____
Other Areas _____ @ \$11.00 = _____

Total (US funds only) = _____

Method of payment: Cheque ___ Money order ___ Mastercard ___ VISA ___

Name exactly as on credit card _____

Card number _____


Exp. Date _____ Signature _____

Registering by telephone

To register by phone, call **1 (800) 414 2237**. In Canada, call **1 (800) 563 7138**.
Or, where international 800 service is unavailable, please call **1 (250) 382 5828**.

Operators are standing by to take your order 24 hours a day, every day of the week.

Please have your **VISA** or **MasterCard** ready when you place your call.

You may also need to provide your *Pre-registration* code. To obtain your Pre-registration code, click on , then click on *Register...* and enter your name in the box. Your pre-registration code will appear in the box below.

Registering by FAX

1. Print out and complete the supplied order form REGISTRATION_FORM.
2. FAX the completed form to 1 (800) 819 2207 [outside North America: 1 (250) 382-7099].
3. We will send you your registration number via e-mail or post.

Registering by postal mail

1. Print out and complete the supplied order form.
2. Send completed order form with your US funds cheque or money order to one of the addresses listed at the top of the order form.

Your registration information will be sent to you via e-mail or post.

Registering by Internet

If you have a credit card, you can register via a secure Internet server at our web site:

<http://www.acdsystems.com/order.htm>

Licensing details

1. Distribution

This shareware software may be freely distributed, provided that:

1. Such distribution includes only the original archive supplied by ACD Systems, Ltd. You may not alter, delete or add any files in the distribution archive.
2. The distribution does not include a registration number. In particular, you may not distribute a registered version of ACDSee.
3. No money is charged to the person receiving the software, beyond reasonable cost of packaging and other overhead.

For information about redistribution of ACDSee...

<i>WWW:</i>	<i>http://www.acdsystems.com</i>
<i>E-mail:</i>	<i>acdsales@acdnet.com</i>
<i>Fax:</i>	<i>1 (800) 819 2207 (toll free)</i>

2. License

By receiving and/or using ACD Systems software, you accept the following Evaluation and Registered User Agreement. This agreement is a binding legal agreement between ACD Systems Ltd. and the purchasers, users or evaluators of ACD Systems' software and products. If you do not intend to honor this agreement, remove all installed ACD Systems software from your computer now.

3. Evaluation (Unregistered) and Registered User Agreement

3.1. Unregistered shareware use

You may evaluate the Shareware program for maximum of thirty calendar days, after which you must register the program with ACD Systems Ltd. or remove the software from your computer.

You may allow other users to evaluate copies of the unregistered Shareware. All evaluation users are subject to the terms of this agreement.

3.2. Usage and distribution restrictions

The evaluator/user/buyer/owner may not use or distribute ACD Systems' software for any unlawful purpose. Distribution of ACD Systems' software together with pornographic material is prohibited.

The evaluator/user/buyer/owner is not allowed to attempt to reverse engineer, disassemble or decompile ACD Systems Software and products.

3.3 Copyright restriction

ACD Systems name and any logo or graphics file that represents our software may not be used in any way to promote products developed with our software. All parts of ACD Systems software and products are copyright protected. No program, code, part, image, video clip, audio sample, text or computer generated sequence of images may be copied or used in any way by the user except as intended within the bounds of the single user program.

3.4. Limitation of responsibility

The evaluator/user/buyer/owner of ACD Systems software will indemnify, hold harmless, and defend ACD Systems against lawsuits, claims, costs associated with defense or accusations that result from the use of ACD Systems software.

ACD Systems is not responsible for any damages whatsoever, including loss of information, interruption of business, personal injury and/or any damage or consequential damage without limitation, incurred before, during or after the use of our products. Our entire liability, without exception, is limited to the customers' reimbursement of the purchase price of the software (maximum being the suggested retail price as listed by ACD Systems) in exchange for the return of the product, all copies, registration papers and manuals, and all materials that constitute

a transfer of ownership from the customer back to ACD Systems.

3.5. Licensed software restrictions

Each registered copy of the ACD Systems software may be used in only one single location by one user. Use of the software means that you have loaded the program and run it or have installed the program onto a computer. If you install the software onto a multi-user platform or network, each and every individual user of the software must be registered separately.

You may make one copy of the registered software for backup purposes, providing you only have one copy installed on one computer being used by one person. If any person other than yourself uses ACD Systems' software registered in your name, regardless of whether it is at the same time or different times, then this agreement is being violated!

The sale of and or distribution of registered copies of this software is strictly forbidden. It is a violation of this agreement to loan, rent, lease, borrow, or transfer the use of registered copies of ACD Systems Software products.

Getting program updates

You may download ACDSee from the following sources:

Internet WWW

<http://www.acdsystems.com>
<http://www.acdnet.com>
<http://www.acdsys.com>
<http://www.acdvictoria.com>

Internet FTP

<ftp://ftp.acdsystems.com>
<ftp://ftp.servtech.com/pub/users/acdsys>
<ftp://ftp.islandnet.com/acd>

Direct Modem Connection

(250)479-6253, N81, 9600-14.4k, login as *acdsys*

How to get technical support and contribute feedback

Technical Support

Registered users are entitled to technical support, should the need arise. Please contact us by email at acdtech@acdsystems.com. If you do not have e-mail access, you may telephone us at 1 (250) 382-4701. Our office hours are Monday to Friday, 9 AM to 5 PM PST.

Feedback

If you have any comments or concerns about ACDSsee please direct them to acdshare@acdsystems.com. Your feedback is important to us in order to get an idea of how to make ACDSsee a better product for *you*. Many of ACDSsee's features and significant portions of ACDSsee's interface have been heavily influenced by comments from users. So if you have a grand idea for a new feature, or a better way of doing something, please drop us a note.

Contacting ACD Systems

E-mail acdtech@acdsystems.com

WEB <http://www.acdsystems.com>
<http://www.acdnet.com>
<http://www.acdsys.com>
<http://www.acdvictoria.com>

FTP <ftp://ftp.acdsystems.com/pub>
<ftp://ftp.servtech.com/pub/users/acdsys/>
<ftp://ftp.islandnet.com/acd>

Telephone **Support** 1 (250) 382 4701 9 AM to 5 PM PST, Monday to Friday
 Orders only 1 (800) 414 2237 24 hours a day, 7 days a week
 1 (250) 382 5828

FAX **N. America** 1 (800) 819 2207
 International 1 (250) 382 7099

Post **USA** ACD Systems, Inc.
 Suite 100, 2201 North Collins
 Arlington, TX 76011

International ACD Systems, Ltd.
 PO Box 730
 Victoria, BC, Canada V8W 2P9

Acknowledgments

- The colour quantization/dithering features and JPEG decoder of ACDSee were made possible through the use of code produced by the Independent JPEG Group.
- ACDSee's TIFF support was made possible through the use of code in Sam Leffler's TIFF library, version 3.4 beta.
- Thanks to the beta testers who help track down problems before ACDSee is publicly released
- Thank you to all other users who have contributed to ACDSee by communicating problems, suggestions, designs and art work.
- Finally, thanks to all users who supported the development of this software by registering and recommending it to their friends and colleagues

Patterns

Used with the [Find Images command](#), patterns can be used to search for files with names matching specific criteria. A pattern can be as simple as a portion of a filename you are searching for, or it may include wildcards.

- Pattern matching is not case-sensitive.
- Separate multiple patterns with spaces or semicolons [;]
- If you want to match a pattern containing a space or semicolon, enclose the pattern in quotes.

Wildcards

A pattern may include any of the following wildcards:

- ? Match any single character in the filename.
e.g. **ca?.jpg** will match *cat.jpg*, *cap.jpg*, and *car.jpg*, but not *cats.jpg*
- * Match zero or more characters in the filename.
e.g. **cat*** will match *cat.jpg*, *cats.jpg*, and *cathy.jpg*
- [...] Match any of the enclosed characters.
e.g. **ca[tr]** will match *cat.jpg* or *car.jpg* but not *cap.jpg*
- [!...] Match any character not enclosed.
e.g. **cat[!0]** will match *cata.jpg* and *catb.jpg* but not *cat0.jpg*
- [...-...] Match any character in the specified range.
e.g. **cat[a-f0-9]** will match *cata.jpg*, *catb.jpg*, ..., *catf.jpg* and *cat0.jpg*, *cat1.jpg*, ..., *cat9.jpg*
- \ Escape a wildcard character.
e.g. **cat\[?\]** will match *cat[1].jpg*, *cat[2].jpg*, etc...

If you do not include the wildcard * in your pattern, the pattern will be matched as a substring.
e.g., **cat** would match *cat*, *cathy* and *bobcat*, and is equivalent to the pattern ***cat***

Hide all files that are not images readable by ACDSee.

Tip: you can also toggle this option with <Ctrl+I>

Show files and folders that have the “hidden” attribute.

This option also determines whether hidden files and folders are considered in the *Slide Show* and *Find Images* procedures.

Tip: you can also toggle this option with <Ctrl+H>

Show local drives as items in the file list.

Show the same file icons as Explorer. Otherwise, a set of generic icons is used (which is faster).

Automatically adjust the widths of the columns in detail view to fit the contents of the file list.

Tip: you can automatically adjust the column widths at any time with <Ctrl+NumPad+>.

Show a preview of each image as it is selected.

Tip: You can also set this option by clicking on the preview area with the secondary mouse button.

Wait for a period of time (in 1/100ths of a second) after an image is selected before engaging the automatic preview.

- + increase to reduce sluggish response to image selection
- decrease to cause the preview to appear more rapidly

Sets the size of the preview image

Full full resolution

1/2 one half resolution

1/4 one quarter resolution

1/8 one eighth resolution

Auto variable - uses the largest resolution that fits in the available preview area

Tips: 1) You can also set this option by clicking on the preview window with mouse button #2
 2) You can toggle between Full and Auto size with <NumPad *>

Don't ask for confirmation before files are deleted. This option has no effect if the delete confirmation is turned off system-wide for the drive containing the file.

Tip: You can also bypass confirmation on an ad hoc basis by holding down <Ctrl> while you invoke the Delete command.

Confirm the deletion of folders, even if confirmation has been bypassed with the "No confirmation" option or by holding down the <Ctrl> key.

Delete files permanently, rather than moving them to the recycle bin. This option has no effect if the recycle bin is turned off system-wide.

Tip: You can also bypass the recycle bin on an ad hoc basis by holding down <Shift> while you invoke the Delete command.

Specify the character used to separate copy numbers from the base file name when files are auto-renamed.

E.g., The default separator, '_', gives

foo.bar -> foo_1.bar -> foo_2.bar -> ...

Cache image information in a file called "descript.ion". Information about the files in the current folder will be automatically saved to and recalled from this file rather than examining every file in the directory each time it is entered, thus speeding up performance significantly.

Note: If thumbnail caching is enabled, the image dimensions are already cached in the image database file and you should therefore not check this option.

Set the hidden attribute on description files.

Read and write file descriptions in Oem character set, converting to Ansi for display. Otherwise, no conversion is performed.

Start up in the folder last accessed from the previous session.

When an item is selected, allow its name to be edited by clicking on it.

When the file list is in detail view mode, allow editing of a file's description by double-clicking in the description column.

Display the current version number of ACDSee in the window title.

Show the full path (folder + file name) of the currently viewed image file. Otherwise, only the file name is shown.

Tip: You can temporarily display the full path name in the status bar by holding down the <P> key.

Show the full path of the current folder in the window title.

When a single image is selected and the View command is invoked, causes all images in the current folder to be added to the view list. Otherwise, only the selected image is accessible.

This option is useful for conveniently stepping through a directory of images in view mode.

Note: When multiple files are selected in the Browser, normal operation ensues -- only the selected files are viewed.

Causes the Viewer to exit after the first image displayed is deleted or moved. If ACDSee was previously in Browser mode, it will return to Browser mode automatically after the last image in the view list has been deleted.

Sets the policy on whether files should be examined for image data.

Never	do not examine any files, ever
Always	always examines all files
Only on fixed disks	examine files on local hard drives only
Only on non-floppy and non-CDROM disks	don't examine files on A:\, B:\ or CD-ROM drives

When the **Never** setting is in effect, it is assumed that all files ending in an appropriate extension (.BMP, .JPG, etc.) are images files, and all other files are not. In addition, image properties are not displayed until after each image is accessed by previewing it. This is the fastest option because no files need to be opened for examination. However, some features such as "highlight images" and sorting on image dimensions may not work as effectively.

By contrast, the **Always** setting examines all files regardless of their extension. This allows the detection of image files with non-standard extensions. In addition, image properties are fetched for all image files.

Because all files are examined every time a folder is entered, this option can cause a lot of disk access and cause sluggishness. This is especially so when reading from slow-access removable media such as floppy, CD-ROM and network drives. The **Only on fixed disks** and **Only on non-floppy and non-CDROM disks** options are thus useful compromises.

Tip #1: You can cancel the file examination process on an ad hoc basis by hitting <Esc> or double-clicking on the progress meter. Press <Pause> or double-click on the progress meter to resume.

*Tip #2: You can optimize file examination tremendously by enabling the **cache image info in description** option (or the **cache thumbnails** option)*

Enter your full name here. It must contain at least 5 letters.

This is your pre-registration code. It is generated from your name. ACD Systems may ask you for this number if you register by telephone.

This is the product ID number. It identifies the product and version that you are registering. ACD Systems may ask you for this number if you register by telephone.

Connects to the ACD Systems Registration web page using your Web browser.

Displays more information about the registration process.

Type in the registration code given to you by ACD Systems when you register.

Validates your registration information and unlocks the software

Closes the dialog box without validating your registration information.

Pre-load the next image in the list

Determines when a timed (automatic) slide show will be started automatically:

<i>Never</i>	Never start automatically
<i>For Browser's slide show commands</i>	Start automatically when using the slide show commands from the Browser window
<i>Always</i>	Start automatically whenever more than one image is present in the Viewer's image list

Specifies not to stop the slide show when the last image of a sequence is reached.

In a slide show, pause for this amount of time before showing the next image

In a slide show, don't flip to the next image until it has finished loading [thus overriding the delay setting].

Order the presentation of images in a slide show from first to last.

Order the presentation of images in a slide show from last to first.

Order the presentation of images in a slide show in a random permutation.

Each image is shown exactly once.

The sequence will be repeated if the *Wrap around* option is turned on.

Use single pass quantization to 256 colours with ordered dithering to enhance the display of true colour and high colour images on a 256 colour display.

Use single pass quantization to 256 colours with Floyd-Steinberg dithering to enhance the display of true colour and high colour images on a 256 colour display.

Use two pass quantization to 256 colours with ordered [pass 1] and Floyd-Steinberg [pass 2] dithering to enhance the display of true colour and high colour images on a 256 colour display.

Do not use ordered dithering to enhance the display of true colour images on a high colour display.

Use ordered dithering to enhance the display of true colour images on a high colour display.

Use single pass quantization to 256 colours with ordered dithering to enhance the display of true colour and high colour previews and thumbnails on a 256 colour display.

Use single pass quantization to 256 colours with Floyd-Steinberg dithering to enhance the display of true colour and high colour previews and thumbnails on a 256 colour display.

Use two pass quantization to 256 colours with ordered [pass 1] and Floyd-Steinberg [pass 2] dithering to enhance the display of true colour and high colour previews on a 256 colour display.

Note: In thumbnail mode, all images will be shown using single-pass quantization with FS dithering

Do not use ordered dithering to enhance the display of true colour previews and thumbnails on a high colour display.

Use ordered dithering to enhance the display of true colour previews and thumbnails on a high colour display.

Place the viewer window on top of all other windows, even when it is not the active window.

Tip: This option is also available from the window's system menu <Alt+Space>.

Use the entire display to view images.

Tip: You can toggle full screen mode with <Ctrl+F>, or the middle mouse button, or by holding down the left mouse button and clicking the right mouse button

Show the tool bar.

Tip: You can toggle this option with <Ctrl+Shift+T>
You can temporarily display the tool bar by holding down the <T> key.

Show the status bar.

Tip: You can toggle this option with <Ctrl+Shift+B>
You can temporarily display the tool bar by holding down the key.

Show the menu bar.

Tip: You can toggle this option with <Ctrl+Shift+M>
You can temporarily display the menu bar by pressing the <M> key.

Show the tool bar.

Tip: You can toggle this option with <Ctrl+Shift+T>

Show the status bar.

Tip: You can toggle this option with <Ctrl+Shift+B>

Show the menu bar.

Tip: You can toggle this option with <Ctrl+Shift+M>

Show the box containing the path of the current folder.

Tip: You can toggle this option with <Ctrl+Shift+D>

Show the folder tree

Tip: You can toggle this option with <Ctrl+Shift+F>

Show the shortcuts panel

Tip: You can toggle this option with <Ctrl+Shift+Q>

Show the preview area

Tip: You can toggle this option with `<Ctrl+Shift+P>`

Shrink large images to fit the size of the viewing window

Tip: You can toggle this option with <Ctrl+NumPad->.
You can shrink an image to fit the window at any time with <NumPad *>.

Enlarge small images to fit the size of the viewing window

Tip: You can toggle this option with <Ctrl+NumPad+>.
You can enlarge an image to fit the window at any time with <NumPad *>.

Automatically change the size of the viewing window to match the size of the image

View externally opened images with a new instance of ACDSee.

View externally opened images with the current instance of ACDSee, if one is available.
The images are added to the current image list.

View externally opened images with the current instance of ACDSee, if one is available.
The current image list is emptied before new images are received.

Remove all images in the image list before adding dropped files.

Append dropped files to the current image list.

This is the path containing the files which will be moved or copied

This is the path to which the files will be moved or copied.
Type in a path, select one from the most recently used list below, or click on *Browse...*
If you enter a path that does not exist, it will be created for you.

Click this to choose another path. You'll be able to browse through the folders on your computer.

Removes the selected path from the history list.

Removes all paths from the history list.

Specifies the action to be taken when a file that is being moved or copying already exists in the destination folder.

Replace	Overwrite the destination file with the source file.
Skip	Skip the operation.
Rename	Move or copy the source file, giving it a new name that is unique in the destination folder.
Ask	Prompt for a course of action.

Perform a byte by byte comparison before overwriting files in the destination folder. If the files are identical, the file is automatically skipped (the source file is removed if performing a *move* operation).

Modify the file name for the copied/moved file.

Goes ahead and moves or copies the files.

Cancels the move or copy operation.

Select the program you want to use from the list. If the program you want to use is not in the list, click *Other...*

Enter any command-line parameters that you want passed on the command-line to the program.
(For example, Media Player accepts the */play* option, which causes it to automatically play the media file and exit media player when done.)

Specifies that whenever you open this file, or any other file with the same filename extension, Windows will use the program specified.

Click this to choose another program. You'll be able to browse through the folders on your computer.

Attributes of the file that will be overwritten

Attributes of the file that is being copied or moved

Specifies the new name for the source file

Copies or moves the file source file, replacing the destination file.

Skips this file so that it is not copied or moved

Moves or copies the file, giving it the name specified.

Replaces this and all subsequent files without asking for confirmation

Cancel the entire move or copy operation.

View of the image that will be copied or moved.

View of the image that will be overwritten.

Do not show source or destination images.

Show thumbnails of the source and destination images.

Show the source and destination images at their actual size.

Specifies that when you scroll one of the images, the other should follow in sync.

Set the width of the thumbnail images

Set the height of the thumbnail images

Set the border thickness of the thumbnail images

Displays how the thumbnails will appear in the file list

Enable caching of thumbnails in a central image database file. This allows thumbnails to be recalled from the database rather than generated from the original files every time, resulting in much faster performance. In addition, file header information is also cached in this file to speed up processing of image attributes. (This is equivalent to the “cache in description” option in the *File List* options page).

Specifies the file to cache thumbnails in.

Click this to browse through folders to find the file you want.

Keep the mouse cursor over the clicked button (*Prev. Image, Next Image, Zoom In, Zoom Out*) when the action of the button causes the window position to change. This option is only relevant when *Change window size to fit image* option is on.

Hide the mouse cursor when viewing in full-screen mode. The mouse cursor will be shown only when:

- One of the mouse buttons is pressed.
- <Ctrl> or <Shift> is pressed.
- A selection has been made.

Cause the window to be centered at the *preferred window position* when it is automatically sized. (The preferred window position is the most recently saved window position) Otherwise, the new window position is chosen such that the position of the upper-left hand corner of the window is unchanged, if possible. This option is only relevant when *Change window size to fit image* option is on.

Tip: You can save the current window position at any time by selecting View | Save window position from the menu.

Use device-dependent bitmaps for displaying images rather than device-independent bitmaps. The following table describes the difference between the two bitmap types.

Device-dependent bitmaps (DDBs)

Slower decoding of images
Faster display, zooming and panning
More memory required for some images.
Very large images cannot be displayed.

Device-independent bitmaps (DIBs)

Faster decoding of images
Slower display, zooming and panning
Less memory required for some images.
Images of virtually unlimited size can be displayed

The magnitude of quantitative differences between DDBs and DIBs varies from system to system.

Some systems do not correctly support DIBs due to video driver bugs -- if you experience display problems, try turning on this option.

Use device independent bitmaps with top-down orientation for displaying images. Top-down bitmaps give the fastest performance with most video cards.

Some video drivers may contain bugs and not display top-down bitmaps correctly -- if you experience display problems, try turning off this option.

Modify the list of which file types are opened with ACDSee when double-clicked in Explorer.

In report view, allow items to be selected by clicking anywhere in the row, rather than only on the icon or label.

In report view, draw gridlines between rows and columns.

Specifies how to highlight files that are images

- No highlighting** Don't use highlighting.
- Single colour** Highlight all images using a common colour.
- Multiple colours** Highlight images using colours corresponding to the image types. This option requires a display mode of at least 15 bpp.

Do not save the position and size of the window. The most recently saved position and size are used on startup.

Save and restore the size of the window. The position of the window is determined by Windows.

Save and restore the size and position of the window.

Hide the preview area and do not show previews when in thumbnail view mode.

Automatically update the file list as the contents of the current folder change.

Select (highlight) new files that have been added to the file list by quick-refresh and auto-refresh events.

Set placement of new files that have been added to the file list by quick-refresh and auto-refresh events.

Show folders when in thumbnail mode.

Show non-image files when in thumbnail mode.

Disable the animation of animated GIF images.

Apply gamma correction to images as they are decoded for display or wallpaper. The gamma correction is not applied to images during printing or file conversion.

Specify the gamma constant used for gamma correction, within the range [0.10 .. 3.00]

- A value of 1.0 is the median value, where correction has no effect.
- A lower value darkens the image and increases the dynamic range of brighter areas.
- A higher value lightens the image and increases the dynamic range of darker areas.

Apply gamma correction to the image before printing.

Specify the gamma constant used for gamma correction, within the range [0.10 .. 3.00]

- A value of 1.0 is the median value, where correction has no effect.
- A lower value darkens the image and increases the dynamic range of brighter areas.
- A higher value lightens the image and increases the dynamic range of darker areas.

Display the Print Setup dialog before printing.

Show toolbar button tips.

Show info tips for list items.

Note: Requires comctl32.dll version 4.71 -- available with Microsoft Internet Explorer v4.0 -- or later).

Specify the maximum resolution to work with when reading Kodak Photo CD images. Lowering the maximum resolution will increase decoding speed and decrease memory usage.

Print the image's file name.

Print the path of the folder containing the image file.

Print the image's file description.

Print the image's resolution and format.

Specifies the height of the top margin, in inches.

Specifies the width of the left margin, in inches.

Specifies the width of the right margin, in inches.

Specifies the height of the bottom margin, in inches.

Specifies the sizing mode for the printed images:

- Default** Images are printed at the same size as it is displayed on your monitor. If you are printing an image that you have enlarged or reduced, the printed image will be enlarged or reduced accordingly.
- Fit to page** Images are sized to fill the page as completely as possible, within the margins.
- Specified** Images are sized to fit the specified **Width** and **Height** values as closely as possible.
- Thumbnails** Images are printed out as a series of thumbnails. The printed pages are also known as *contact sheets*. The thumbnail size is specified by the **Width** and **Height** values.

When checked, size the image equally in each dimension so that the ratio of width to height remains the same. Otherwise, the image may be stretched more in one direction than in the other.

Specifies the desired width of the images, in inches.

Specifies the desired height of the images, in inches.

Specifies the resolution, in pixels per inch, at which the images should be printed. This value should be set to the effective resolution of your printer, after taking the resolution reduction due to halftone screening into consideration.

- If you have a *continuous tone* printer, set this value to the printer's DPI rating.
- If you have a *laser, bubble jet*, or other type of discrete tone printer, set this value to approximately $\frac{1}{4}$ of the printer's DPI rating.

This Net DPI value determines how to sub-sample large images prior to sending them to the print driver. A larger value may generate higher quality output, but will use more memory and take longer to print. Conversely, a lower value may generate lower quality output, but will use less memory and print faster.

Note: *If you are experiencing problems printing large images, try lowering the Net DPI value.*

Specifies how to position the images on the page:

top-left	top-center	top-right
center-left	center	center-right
bottom-left	bottom-center	bottom-right

Shows a preview of how the printed pages will look.

- Changes you make to the print setup options will be reflected here.
- It may take a moment to complete internal computations (“pagination”) before the preview is updated to reflect changes.
- Page margins are represented by dotted lines.
- Note that when part of an image boundary lies outside the margins, the image will be clipped to the margins. The clipped areas of the image are drawn in red.

Specifies which page of output to preview.

Save the current settings as the defaults.

Select an output format from the list.

Specify options for the selected output format.

Specify what to do when the output file already exists:

- Replace** Overwrite the existing file.
- Skip** Skip conversion of this file.
- Rename** Change the name of the output file by added _1, _2, etc.
- Ask** Ask for confirmation before overwriting.

Remove the original image file after converting it.

Perform file conversion.

Cancel file conversion.

Specify the JPEG quality/compression level.

Lower value More compression, lower quality

Higher value Less compression, higher quality

The default value is 65.

Save the current settings as the defaults. Otherwise, the settings are applied to the current image set only.

Reset all options to the “factory” settings.

Optimize the Huffman code tables in order to increase compression. Although this option will not affect the image quality, compression will take slightly longer and the file might not be readable by some older software.

Use progressive encoding. Progressive encoding allows images to appear more quickly when transmitted over a low-bandwidth connection, but can slow down decoding when being accessed locally. Progressive encoding also improves compression levels without any loss in image quality. Some older software cannot read progressive mode JPEG images.

Specifies the amount of smoothing to apply to the image before compressing it. Smoothing results in better compression with less visible artifact, but some detail is lost. The default value is 0, for no smoothing.

Specifies how to subsample the colour components of the image.

YUV 111 Don't subsample

YUV 122 Subsample colour components 1:2

YUV 122, the default setting, normally results in much better compression with insignificant loss of quality.

Turns of Run-Length Encoding image compression. This option will reduce the size of the file, but may take longer to encode and decode.

Writes the rows of the image from top to bottom, rather than bottom to top.

Recursively search subfolders of the specified folder[s].

Follow shortcuts [links] to folders when searching subfolders.

Note: ACDSee will automatically detect and fall out of any loops that result.

Automatically view the images found after searching is complete.

Specify text to look for in the file descriptions.

Specify a filename pattern or patterns to search for.

Specify the folder to search.

Start searching. Matching images will be displayed in the view window.

[View the images found in the search.](#)

Close this window.

Check the boxes corresponding to the file types you want to be opened using ACDSee when you double-click on them in Explorer.

Check this box to associate additional file types you specify with ACDSee.

Enter the MS-DOS extensions for the additional file types you want to associate with ACDSee. Separate extensions using spaces.

Check all the boxes above.

Uncheck all the boxes above.

Associate ACDSee as the default handler for each of the file types selected on the left and add an "Open" command to their context menus in Explorer.

Add a "View with ACDSee" command to Explorer's context menu for each of the file types selected on the left. You can select this option and clear the "Open" option if you don't want ACDSee to handle the file types by default, but still want to access ACDSee from their context menus.

Add a "Print with ACDSee" command to Explorer's context menu for each of the file types selected on the left.

Add a "Browse with ACDSee" command to the context menu for folders in Explorer. You can use this command to quickly browse a specific folder with ACDSee.

Specifies the template to use for renaming the files.

The position and width of the number field are determined by the position and number of #'s in the template.

e.g., `file###.jpg` might generate `file001.jpg`, `file002.jpg`, ...

You can insert the original filename (without extension) in your pattern by specifying the * character.

e.g., `*_###.jpg` might generate `dog_001.jpg`, `cat_002.jpg`, ...

If you do not specify a file extension in the template, then the file extension for each new filename will match that of the original. i.e., no file extensions will be changed.

e.g., `file###` might generate `file001.jpg`, `file002.bmp`, ...

To insert a literal # character in the generated filenames, prefix it with a backslash (\).

e.g., `file\####` might generate `file#001.jpg`, `file#002.bmp`, ...

Specifies the initial index value for the generated series of filenames. The number is incremented by one for each name generated.

These are the files that will be renamed. For each file, its current name is listed on the left and its new name is listed on the right.

If you double-click on a file name in the left column, the current template and starting index will be reset based on the selected file name.

Rename the files as shown in the list above.

Cancel the rename operation.

Avoid adding a new file to the current image sequence until the other application (e.g., newsreader) has completed transferring the file. This feature avoids the viewing of partial images.

View new images as soon as they appear in the folder. Otherwise, new images will be added to the image sequence but the currently viewed image will not change.

Enter the folder you want to synchronize to. The current image sequence will be set to the contents of the specified folder. [Only images with recognized MS-DOS extensions will be added]. As images are added to or removed from this folder, they will be added to or removed from the image sequence.

Image sequence

An ordered list of image files readily accessible in view mode using the *Previous Image* and *Next Image* commands.

Rotate the image 180 degrees (i.e., upside-down)

Rotate the image 90 degrees counter-clockwise (i.e., to the left)

Rotate the image 90 degrees clockwise (i.e., to the right)

Specifies that the selected rotation operation should be applied to each of the remaining selected images.

Shows a thumbnail of how the image will appear after rotation.

Cancel the rotation operation.

Perform the selected rotation operation.

Cache the previously viewed image instead of unloading it from memory immediately.

Save the drop-down list of most-recently used folders when ACDSee exits.

Show file sizes in kilobytes instead of bytes.

Keep the image list sorted by filename. New images will be inserted into the appropriate positions in the list. Otherwise, images are added to the end of the list.

Automatically save the position and size of the window whenever you move or resize it. Otherwise, the window position and size is only saved when you invoke the *View | Save window pos.* Command.

Enlarge the images. <+>

Note: You can also enlarge the images by selecting part of an image (hold down <Shift> and drag with the primary mouse button) and then clicking in the selection with the primary mouse button.

Reduce the images. <->

Reset the images to their initial size. <*>

Removes the source file.

Removes the destination file.

Do not compress the image data.

Create a CCITT3 compressed black & white image.

Create a CCITT4 compressed black & white image. CCITT4 gives better compression than CCITT3.

Apply lossless Lempel-Ziv-Welch compression to the image data.

Apply lossless Deflate (ZIP) compression to the image data. This compression scheme gives superior compression to that of LZW, but is not supported by many TIFF readers.

Apply lossy JPEG DCT compression to the image data. This compression scheme gives the smallest image size, but is not supported by many TIFF readers.

Specifies a value for the horizontal resolution of the image, in dots per inch. Some TIFF readers use this value to scale the image when viewing or printing.

Specifies a value for the vertical resolution of the image, in dots per inch. Some TIFF readers use this value to scale the image when viewing or printing.

Show the size of each file below its thumbnail.

Show the dimensions of each image below its thumbnail.

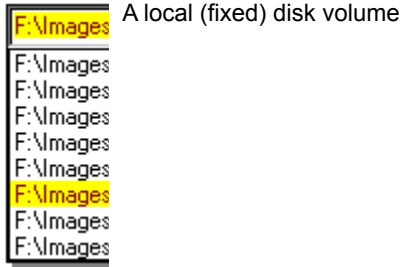
Preview WAV sound files by playing them.

Specifies how to compress thumbnails in the cache:

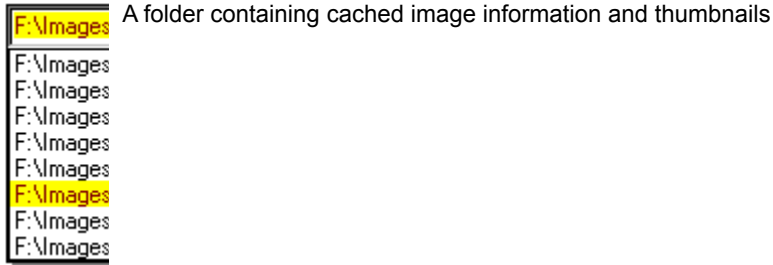
None	Do not compress thumbnails
Lossless	Apply lossless deflate compression
Low	Apply JPEG compression (high quality)
Medium	Apply JPEG compression (medium quality)
High	Apply JPEG compression (low quality)

- *None* is the fastest and gives the best quality, but results in a large cache file.
- *Lossless* is the slowest, but gives the best quality and reduces the cache file size.
- *Low/medium/high* give the smallest cache file size, but thumbnail quality is not as high.

Displays the contents of the image cache. Each folder in the list corresponds to a folder on your computer's file system, or to a folder on a removable volume.



A removable disk volume



A cached folder that no longer exists on your computer

- Starts the optimization process.
- Stops optimization and closes this window.
- Removes all cached information within the selected item..
- Removes all cached thumbnails within the selected item..

Within the selected item, removes all cached information for files and folders that no longer exist on your system.

Frequently Asked Questions – ACDSee 32 version 2.41

ACDSee32 will not open files with spaces in the file or folder name.

The "single-window" mode does not work. Each image I launch comes up in a new window.

After I double-click on an image in Explorer, ACDSee32 comes up and displays the image correctly, but I get a message saying the application could not be started.

These problems are related to incorrect settings in the file association registry. This could be caused by using a program other than ACDSee32 to associate file types to ACDSee32. Do NOT use Explorer to associate files with ACDSee32 -- it does not work correctly!

1. Run ACDSee32.
2. Select **Options** from the **Tools** menu.
3. Click on the **Miscellaneous** tab.
4. Click on the **Set File Associations...** button.
5. Mark the check boxes for the file associations you wish to be in effect.
6. Click on **OK**

When running ACDSee from the Agent newsreader, ACDSee cannot open images when the filename or path contains a space.

This problem is caused by an incorrect entry in the MIME table. The entry should read,
"C:\Program Files\ACDSee32\ACDSee32.exe "%1"

In particular, ensure that there are double-quotes around the "%1". Because ACDSee accepts multiple filenames on the command-line, omitting the quotes around the filename placeholder makes it impossible for ACDSee to parse the command-line without ambiguity.

When I send several files (via Tools | Shell | Edit) to my Editor software, it opens a separate window for each file.

Usually a program (as is the case with ACDSee) will use a DDE mechanism to support "single-instance" editing of multiply launched files. The Windows shell will utilize the DDE mechanism when it has been set up correctly in the registry. If you associated *Editor* using ACDSee's "Edit with..." command, however, ACDSee does not know the DDE specifics for *Editor* and therefore just uses the default method, which in this case results in multiple windows.

If your *Editor* supports single-instance mode via the DDE:

1. Go into ACDSee's *Miscellaneous* options page, click on *Set file associations*, and **remove** all associations to ACDSee by clearing all the boxes. Then click on *OK*.
2. Use *Editor* to re-associate the file types to itself. Some software you may have to reinstall in order to accomplish this. Check your *Editor* documentation.
3. Start ACDSee. Re-associate all the file types back to ACDSee using the same procedure as in step 1 (except you check all the boxes, of course). ACDSee will see the references to *Editor* and copy these (including DDE info) into its "Edit with..." associations before overwriting them.

Note that ACDSee never uses the DDE mechanism when you drag and drop files into applications in the shortcut list. You must use *Tools | Shell | Edit* to use DDE.

I have an image file that someone e-mailed me, or that I downloaded it from a newsgroup. It is one of the types that ACDSee is supposed to support, but when I try to view it, I get a black screen and a message in the status bar saying "Bad or unrecognized image header".

The file may be uuencoded, or encoded as BinHex or MIME. You will need to decode it into binary format before ACDSee can read it.

1. Install the *DecExt* freeware, available from <http://mirror.direct.ca/tucows/adnload/dldsextension.html>
2. In ACDSee, hold down <Shift> and click on the encoded file with the alternate mouse button.
3. Select **Decode** from the context menu.
4. A decoded file will be generated. You may have to press <Shift+F5> to refresh the file list in order to see it.
5. The generated file should now be viewable by ACDSee.

The icons displayed for ACDSee's file types (.BMP, .GIF, etc.) are incorrect.

First of all, make sure your file associations are set up correctly by going into ACDSee's *Miscellaneous Options*, clicking on *Set File Associations*, checking off the relevant types, and then pressing OK.

Secondly, there is a problem with the Windows 95 system icon cache that can cause incorrect icons to be displayed. Use the following steps to get around this problem:

1. Open *Control Panel* and double-click on *Display*
2. Click on the *Appearance* tab
3. Select *Icon* from the *Item* list
4. Increase the icon size by one and click *Apply*
5. Decrease the icon size by one and click *OK*

The options "Show gridlines", "Full row select" and "Highlight image files" are disabled.

and/or:

The option "Info tips" is disabled.

These options require a newer version of comctl32.dll. Run ACDSee's setup program again and allow it to update your comctl32.dll file.

After installing the comctl32.dll update, things scroll slowly. How do I get it to scroll like it did before?

The new version of comctl32.dll has a "Smooth scroll" feature. You can turn it off using the *TweakUI* component of Microsoft's *PowerToys* software:

1. Download *PowerToys* from <http://www.microsoft.com/windows95/info/powertoys.htm> and install the *TweakUI* applet.
2. From *Control Panel*, Open *TweakUI*.
3. Click on the *General* page.
4. Clear the *Smooth scrolling* box.

How do I keep the file list from refreshing as I download files?

Turn off the Auto-refresh option under the View menu, or turn off the Auto-select option in the File List options tab. Remember to save your options to make the change permanent.

Sometimes the Page Down key does not work correctly in the file list.

This is caused by a bug in the Windows list view common control, and only occurs when the file list is set to a certain height. To get around the problem, you just need to slightly change the height of the file list.

Images are not displayed correctly in ACDSee 32.

Some video drivers contain subtle bugs that can cause display problems with ACDSee. There may be updated drivers for your card that no longer contain the bug. Otherwise, you should report the bug to the manufacturer of your video display.

You can also try the following procedure:

1. Run ACDSee32.
2. Select **Options** from the **Tools** menu.
3. Click on the **Miscellaneous** tab.
4. Check the **Use Device-dependent bitmaps** box.
5. Click on **OK**

Finally, you can also try changing the colour depth (# colours) of your display adapter.

When printing, ACDSee is not obeying my custom margin settings and/or output is being clipped.

This problem is due to a bug in version 2.4 of ACDSee. If you modify the margin settings in the Print Setup dialog box that comes up immediately prior to printing and do not click on the "Save *defaults*" button, then ACDSee will clip output to the last-saved margin settings. To get around this problem, always click on "Save *defaults*" after changing the margin settings.

How can I do a slideshow of all files in a folder, including subfolders?

From the Browser, select "Tools | Slideshow all recursive" from the menu. You can also select this command from the context menu for Folders in the Folder Tree, File List and Shortcuts List.

How do I get the ACDSee view window to automatically close when I delete the image I am viewing?

There is an option called "Exit after delete/move" under the Viewer options that you need to turn on. Remember to save your options.

How do I view the images in my Internet Explorer cache?

Internet Explorer actually stores its cached files in four separate folders that might not show up under Explorer or ACDSee. You can see the folders in ACDSee by turning on the "show hidden files" option.

1. Go into ACDSee's *File List* options and check *Show hidden files*
2. Change into your Internet Explorer cache folder ("Temporary Internet Files")
3. Browse each of the four Cache subfolders to view the images inside

****** Internet Explorer Version 4.0 release:***

IE 4.0 may not store the caches files where you think. It can create "phantom cache" folders which don't actually have any files in them, while the actual cache files lie elsewhere. To find out where, see the related question, *How can I use ACDSee to view an image on a Web page I am browsing with Internet Explorer?*

How can I use ACDSee to view an image on a Web page I am browsing with Internet Explorer?

Starting with version MSIE v3.0, you can no longer "associate" ACDSee as a helper application for viewing images. However, you can still use ACDSee to view images from IE using one of the following methods:

- A. Using the clipboard
 1. Click the right ("alternate") mouse button on the image you want to view
 2. Select "Copy" from the context menu
 3. Switch to (or start) ACDSee's Viewer mode
 4. Select "Paste files" from the View menu or press <Ctrl+V>
- B. Using drag and drop
 1. Click and drag the image with the left ("primary") mouse button
 2. Drop onto ACDSee's Viewer window
 3. Note that this method will not work if the image is hyperlinked because Internet Explorer tries to drop the *link pointed to by the image* rather than the image itself

Once you are viewing the image, you can copy it to another folder with the "Copy to" command. If you select

Browser mode, you can browse the part of Internet Explorer's cache ("Temporary Internet Files") wherein the image lies.

The wheel of my Microsoft Intellimouse does not work in ACDSee's Browser window.

At the moment, ACDSee only fully supports the Intellimouse in Windows NT 4.0. In Windows 95 it will only work in the Viewer window. There is, however, a shareware program called "Flywheel" available from www.plannetarium.com that will add Intellimouse support to virtually *any* program, including ACDSee.

When I try to view certain PhotoShop images I get a black screen with the words "You need PhotoShop version 3 to read this file".

There are two possible solutions to this problem:

1. This file may have been generated with an intermediate version of PhotoShop (pre-3.0) and requires re-saving in version 3.0 or later to be read correctly.
2. Make sure you are using the "v2.5 compatibility" option in PhotoShop. In version 4.0, You can find this option in *Preferences* <Ctrl+K> / *Saving Files* / *Options*.

I don't see any items in the Favorites list.

There are three possible reasons for this:

1. You haven't added any items to the Favorites list. To add the current folder to the Favorites list, select *File | Add to favorites...* from the menu.
2. There is a bug in Windows that can prevent the shortcuts from being displayed if the Favorites pane is too narrow. Try increasing its width by dragging the vertical separator control to the left. Or change the Favorites list view style by selecting a different style from the context menu.
3. There may be an error in your registry. To fix, run NotePad and enter the following text:

```
-- cut here --  
REGEDIT4  
  
[HKEY_CLASSES_ROOT\lnkfile]  
@="Shortcut"  
"IsShortcut"=""  
-- cut here --
```

Save the file as "shortcuts.reg". Now double-click on the file you created to enter the information into your registry.

When I use Xmouse, ACDSee is sometimes unresponsive to keyboard input.

There appears to be a conflict between Xmouse and ACDSee's "full-screen" and "always on top" options. Try avoiding these options or lengthening the Xmouse delay setting.

